

# SLU - organisation and government with focus on doctoral education

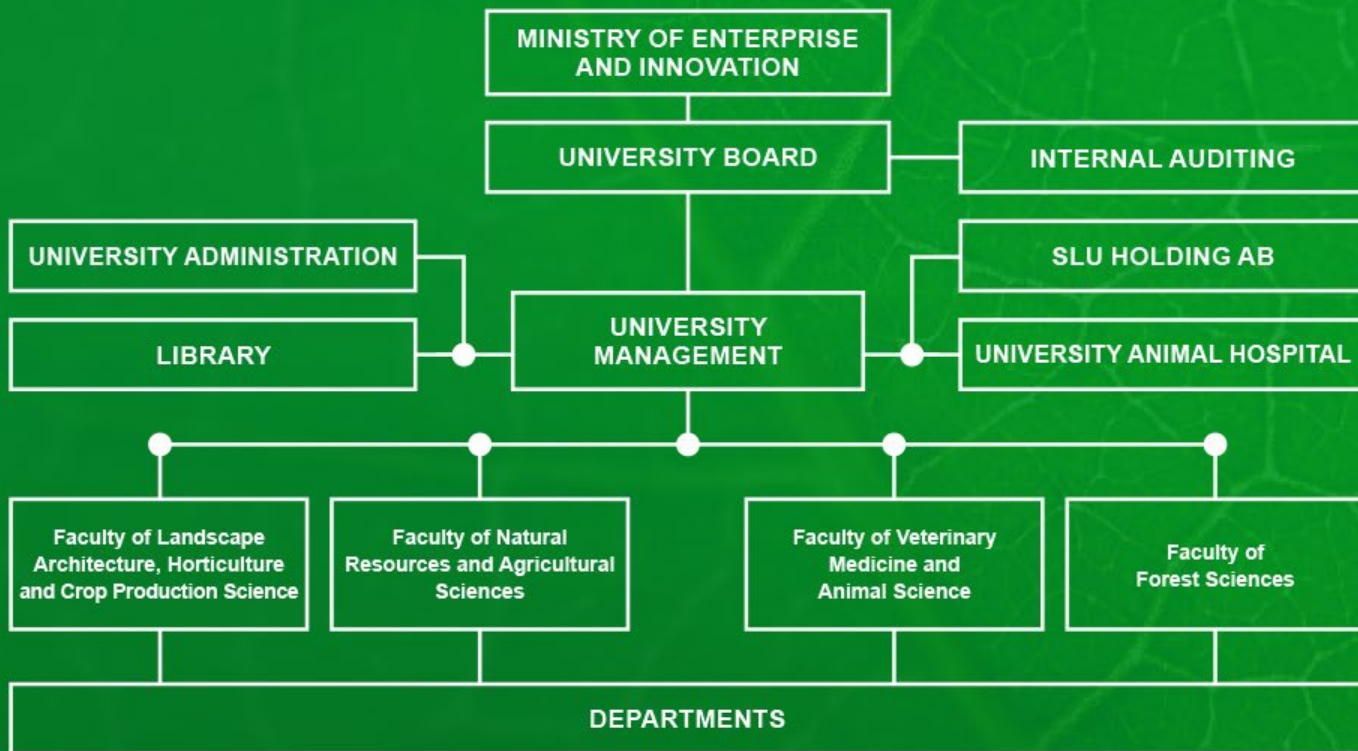
Lotta Jäderlund, Division of Planning  
2022-03-28

# Content

1. Organisation and management of SLU
2. Delegations of authority (delegationsordningar)
3. How is the doctoral education at SLU organised?
4. Who has the responsibility for doctoral education at SLU?
5. Process for quality assurance of education at SLU

## Governance of higher education in Sweden

- Overall responsibility for higher education and research rests with the Swedish Parliament (Riksdag) and the Government (Regering). These decide on the regulations that apply to the higher education sector, primarily the Higher Education Act and the Higher Education Ordinance. They also allocate resources to the HEIs.
- Most HEIs in Sweden are under the responsibility of the Ministry of Education and Research (Utbildningsdepartementet), but SLU is organised under the Ministry of Enterprise and Innovation (Näringsdepartementet).



## **Delegations of authority (delegationsordningar)**

- The delegations of authority describe the powers that have been delegated by the SLU Board to the vice-chancellor or the faculty boards, and from the vice-chancellor to the head of university administration.
- The SLU Board (Styrelsen) is the highest decision-making body at SLU.
- Most decisions are delegated to the four faculty boards.
- Decisions on issues not reserved for the board, or delegated to the faculty boards, are taken by the vice-chancellor.
- The vice-chancellor in turn delegates authority to the head of university administration to decide on matters in that field.

## **There are three delegations of authority at the central level:**

- *The SLU Board's delegation of authority:* Organisation and division of responsibility in relation to the SLU Board and bodies that report directly to it.
- *Vice-chancellor's delegation of authority:* Organisation and division of responsibility in relation to the vice-chancellor of SLU and members of staff who report directly to the vice-chancellor.
- *Delegation of authority for the university administration (in Swedish only):* Organisation and division of responsibility within the university administration.

**The four faculties have their own delegations of authority.**

## Some of the advisory bodies to the Vice Chancellor:

- Vice-Chancellor's Management Group (ledningsrådet)
- Board of Education (UN) (Utbildningsnämnden)
- Council for Doctoral Education (Fur) (Rådet för utbildning på forskarnivå)
  - Fur is a joint university body dealing with overall strategic issues to support, coordinate, stimulate and develop doctoral education.
  - Chairperson: Ylva Hillbur, Pro Vice Chancellor with responsibility for international relations
  - Secretary: Lotta Jäderlund
- Council for Environmental Monitoring and Assessment (Fomar)
- Council for External Collaboration (Sar) (Samverkansrådet)
- Council for Research Infrastructure (Fir)
- Equal Opportunities and Gender Equality Council (JLV Council)
- Library Council (Bir)

# Doctoral education at SLU

- Individual education!
- ... but with a common set of rules:

## **National level:**

The Higher education act (Högskolelagen)

The Higher education ordinance (Högskoleförordningen)

Degree outcomes (Examensmål) – part of HEO

## **SLU level:**

Admission regulations (SLU Board)

Guidelines for doctoral education (Vice Chancellor)

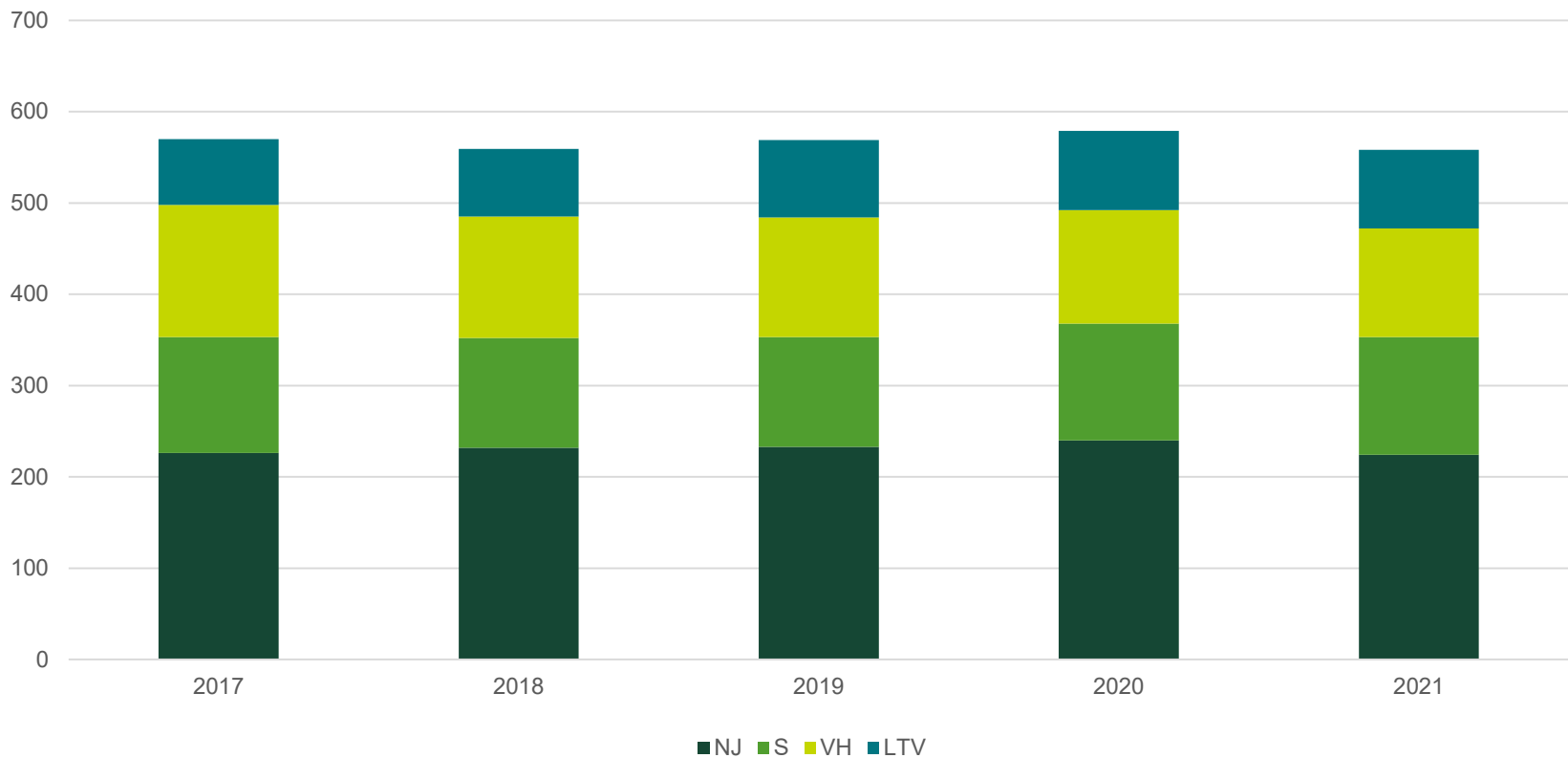
Doctoral education subject with a general study plan

Individual study plan (ISP)

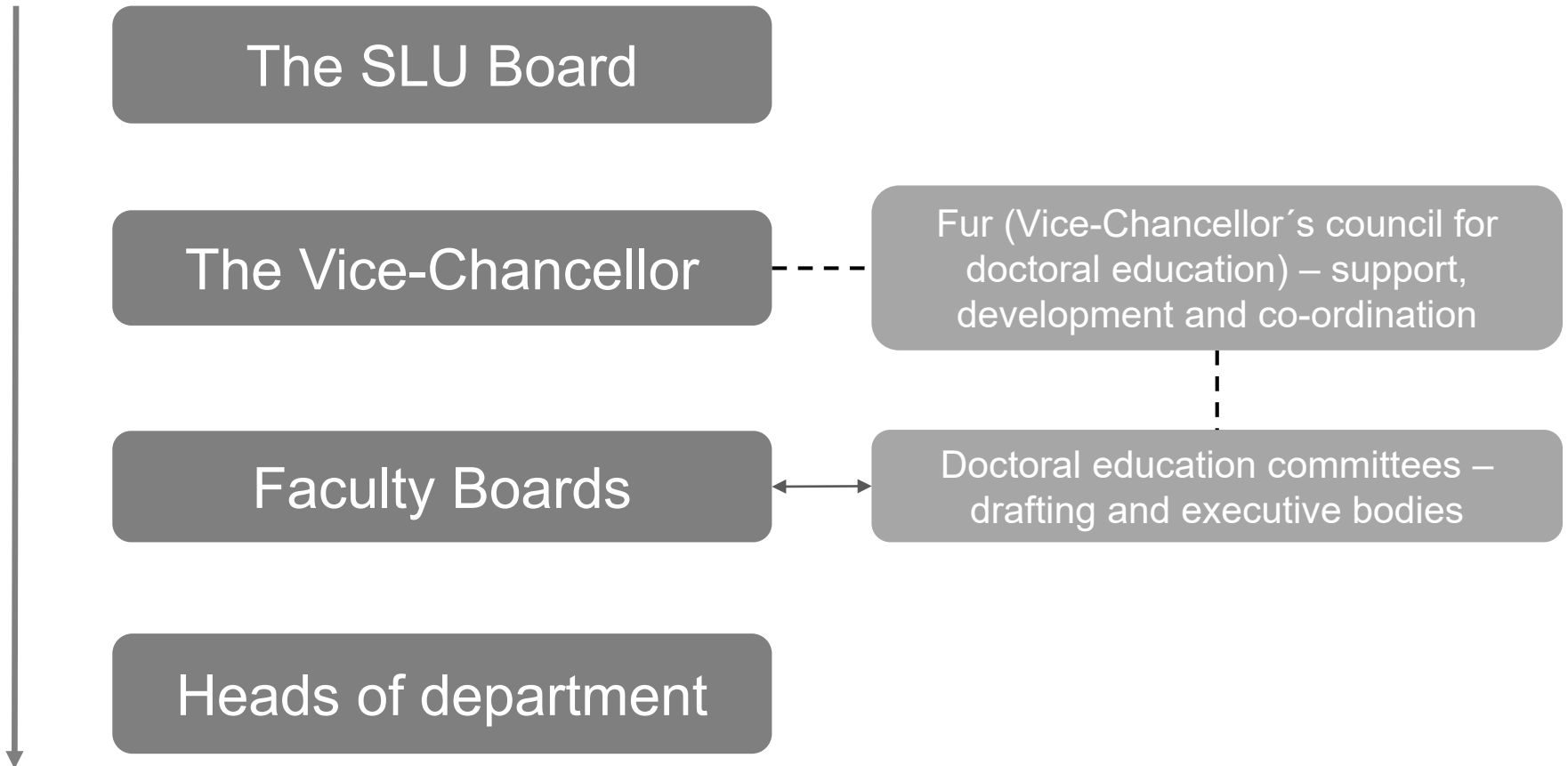


# Number of active doctoral students at SLU per faculty

Number of active doctoral students at SLU



# Doctoral education at SLU – organisation and responsibilities



# Quality assurance process for doctoral education at SLU

- Higher Education Institutions (HEIs) and the Swedish Higher Education Authority (UKÄ) have a shared responsibility for quality assurance in higher education and research.
- The quality assurance process at SLU is systematic and regular. Every year, the university check if the quality standards are met at selected programs/areas.
- The quality work meets national and international requirements and supports the continuous development of the quality of courses and programmes.

# Quality assurance system

## Documents

- Framework - quality areas and quality standards
- Instructions
- Questionnaire (tool for dialogue)

## Process

- Gathering of information (questionnaire is one 'tool')
- => Synthesis = Report (with suggestions for improvement)
- Dialogues
- Decision on measures for improvement (faculty/central),
- Follow up



## Framework – quality areas

- Recruitment, admission, selection and introduction to studies
- Study and learning environment, research and working environment
- Design, content and results
- Teaching and supervision
- Education administration and support
- Transition to working life and career



## Quality assurance process 2022

The focus will be on implementing and following up measures decided during the first cycle (2017-2020).

Each faculty will write a follow up report.

Each **PhD student councils** will be invited to write a report.

Quality dialogues during autumn (participants: chair of Fur, dean and vice dean of each faculty, representatives for supervisors and **doctoral students**, directors of study at faculty level, education officer from each faculty office).

- *A new four-year cycle will start in 2023, with full evaluation of all six quality areas during year 1 (2023), followed by three years with focus on implementation and follow-up (2024-2026).*

You can read more about the quality assurance of SLU's education at the SLU staff web.