

Configure Windows 7 for using the eduroam network

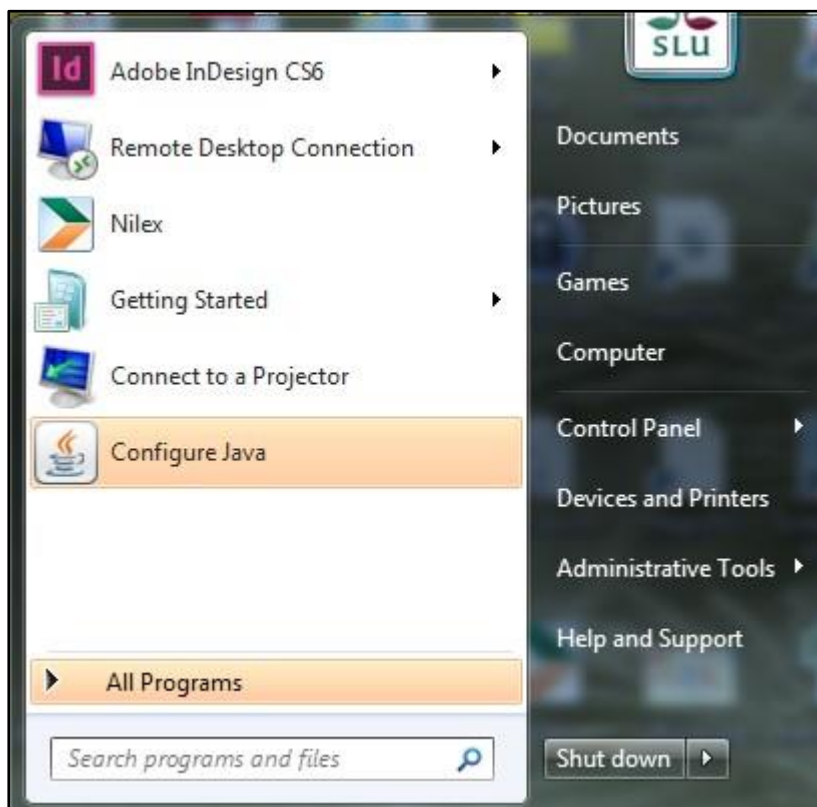
The following instructions will enable you to connect your Windows 7 device to eduroam, the secure wireless network.

Configuration instructions

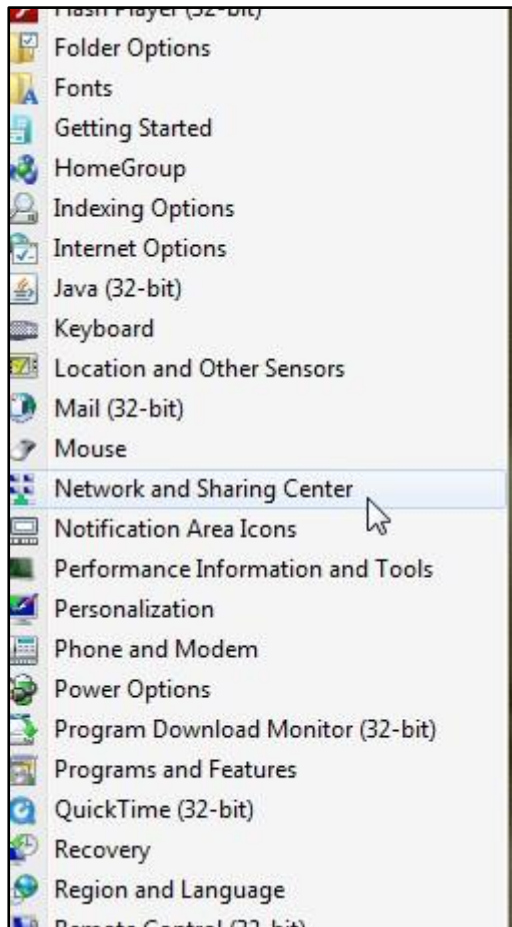
1. Click the Windows logotype in the lower left corner of the screen.



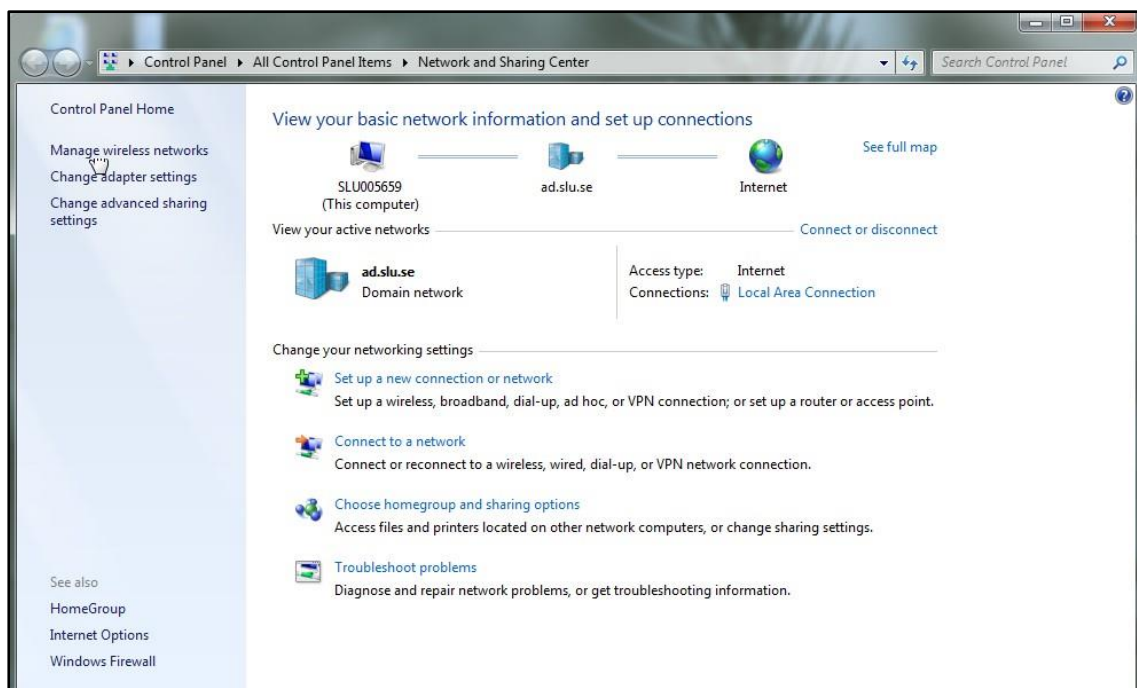
2. Click "Control Panel".



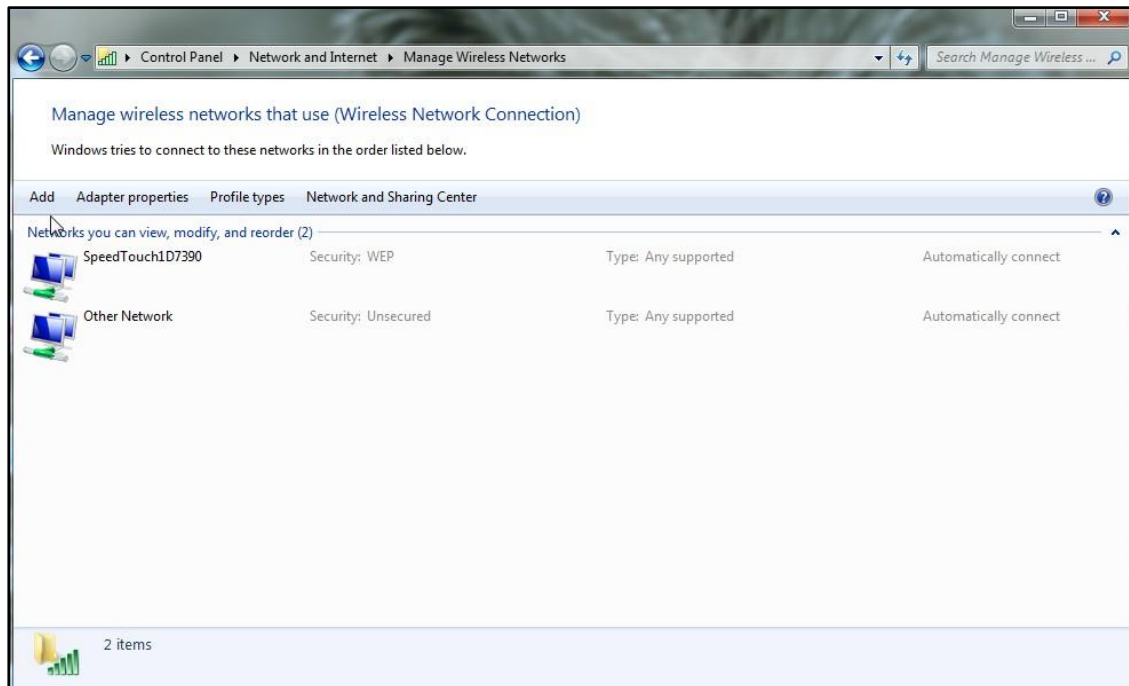
3. Click "Network and Sharing Center".



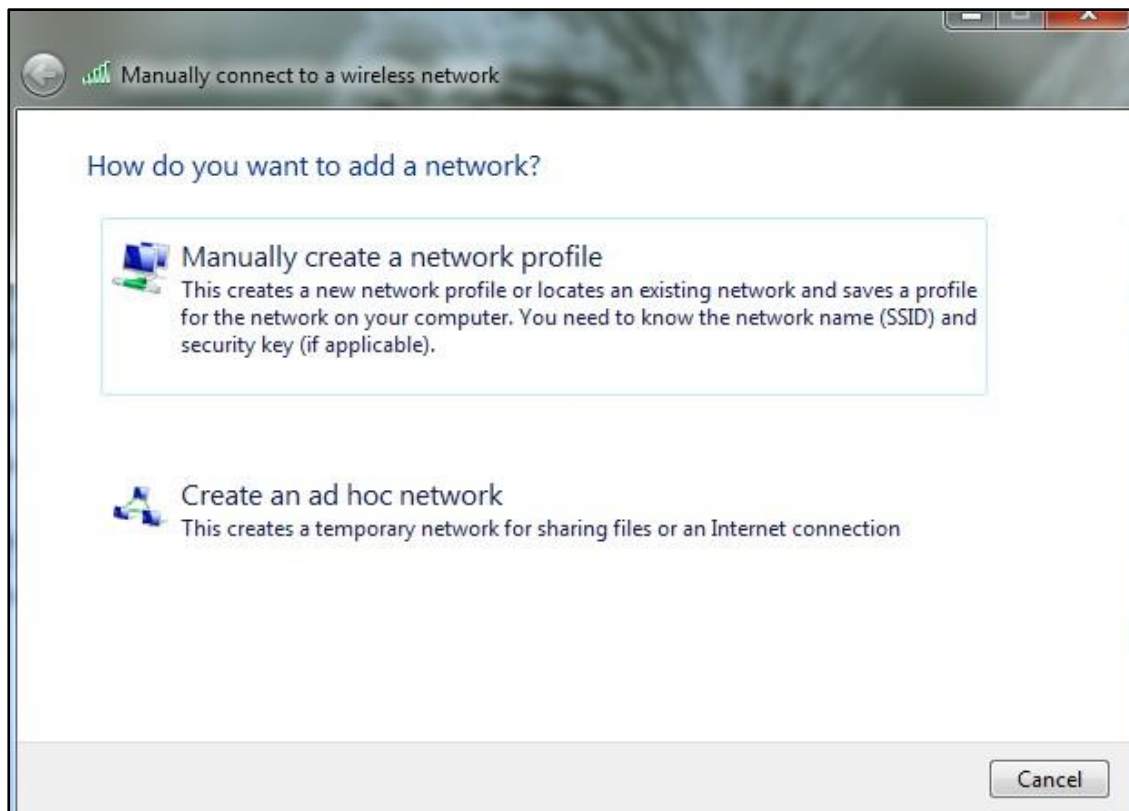
4. Click "Manage Wireless Networks".




5. Click the Add button in the dialouge box "Manage Wireless Networks".



6. Click "Manually create a network profile".



7. Type/choose text/values shown in the picture below. Then click Next.

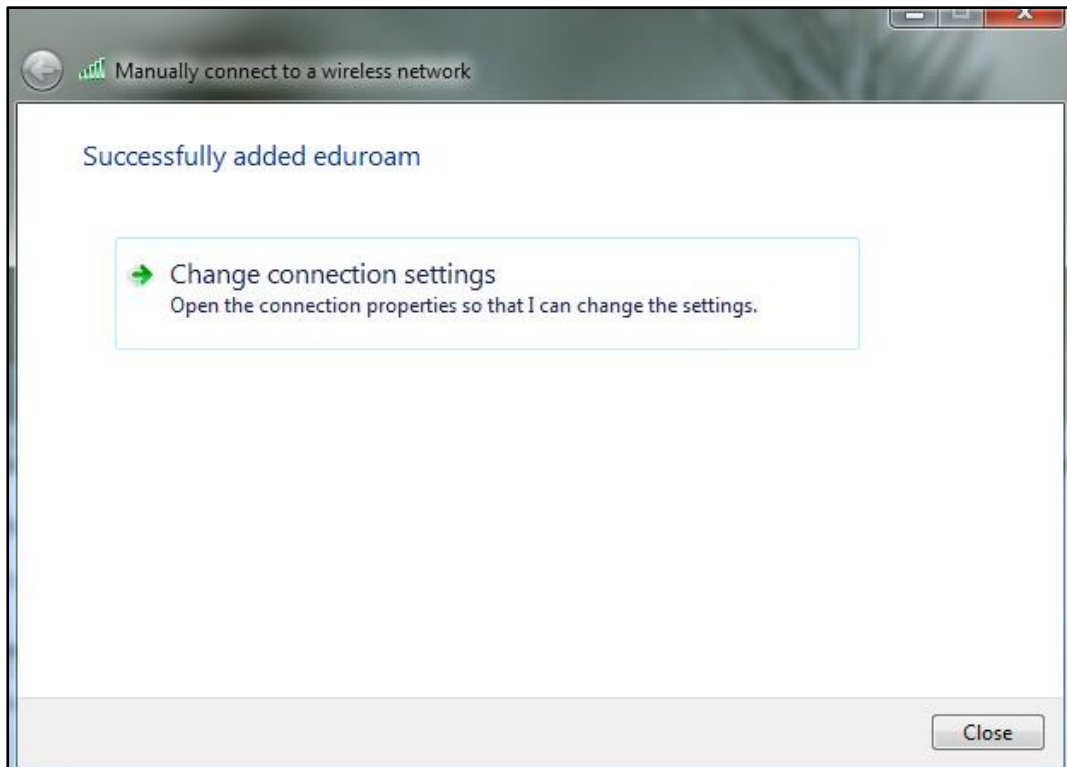


The image shows a Windows dialog box titled "Manually connect to a wireless network". The dialog box contains the following fields and options:

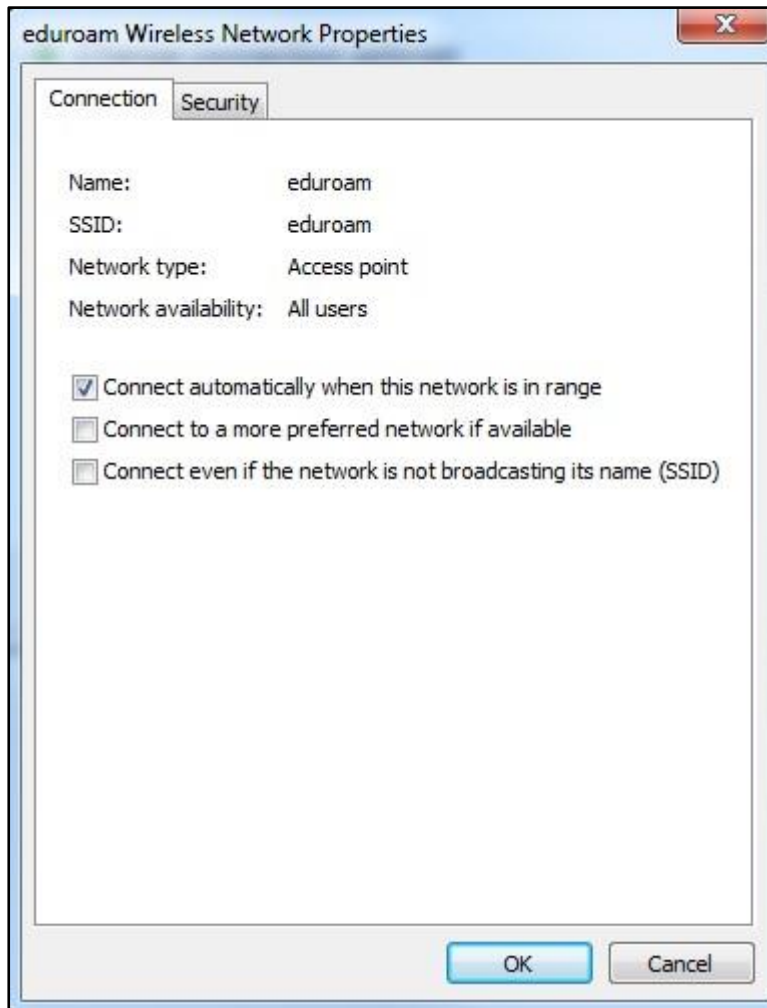
- Network name:** A text input field containing the text "eduroam".
- Security type:** A dropdown menu with "WPA2-Enterprise" selected.
- Encryption type:** A dropdown menu with "AES" selected.
- Security Key:** An empty text input field. To its right is a checkbox labeled "Hide characters", which is currently unchecked.
- Start this connection automatically:** An unchecked checkbox.
- Connect even if the network is not broadcasting:** An unchecked checkbox. Below this checkbox is a warning message: "Warning: If you select this option, your computer's privacy might be at risk."

At the bottom right of the dialog box, there are two buttons: "Next" and "Cancel".

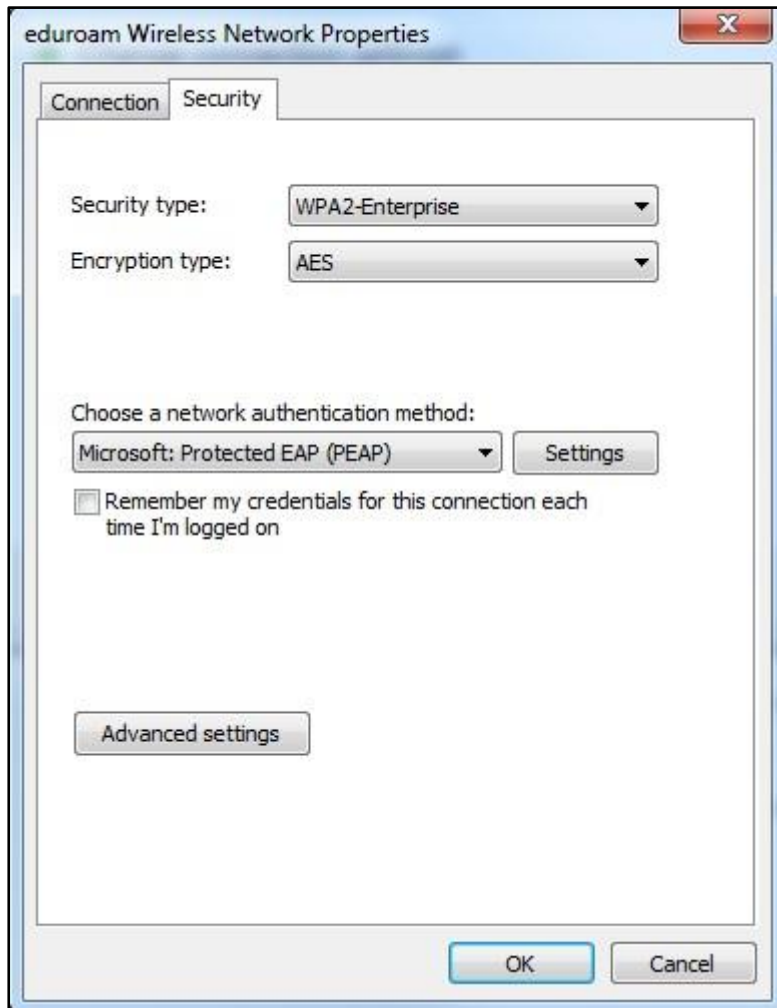
8. Click "Change connection settings".



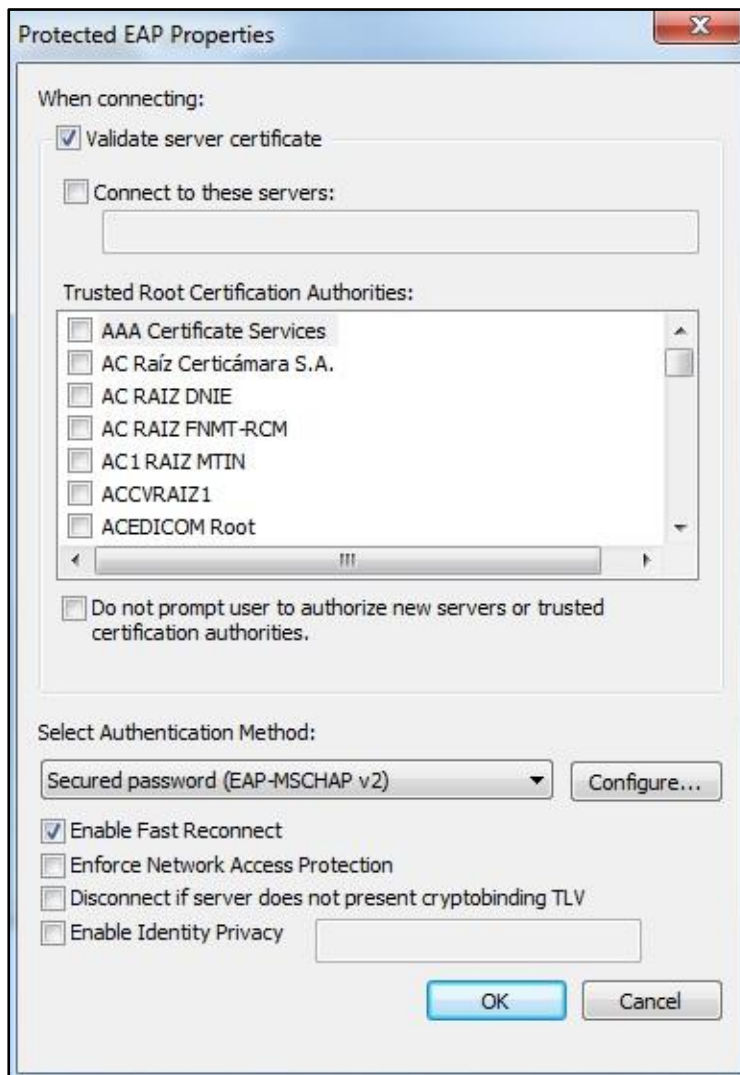
9. Click the Security tab.



10. Click the Settings button.



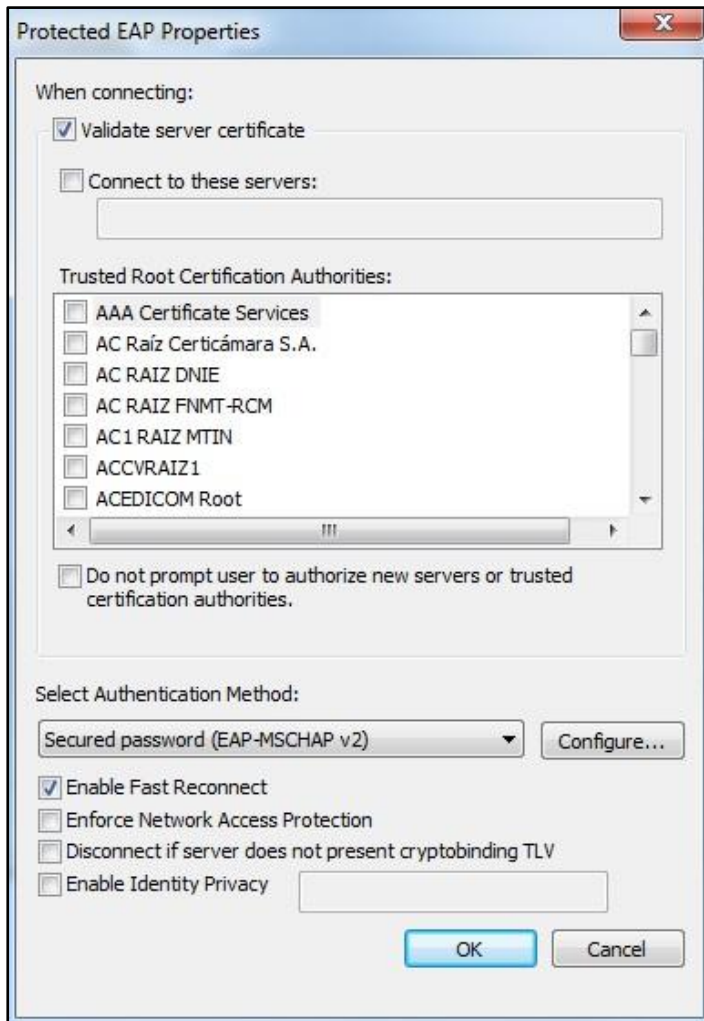
11. Type/choose text/values shown in the picture below and then click the Configure button.



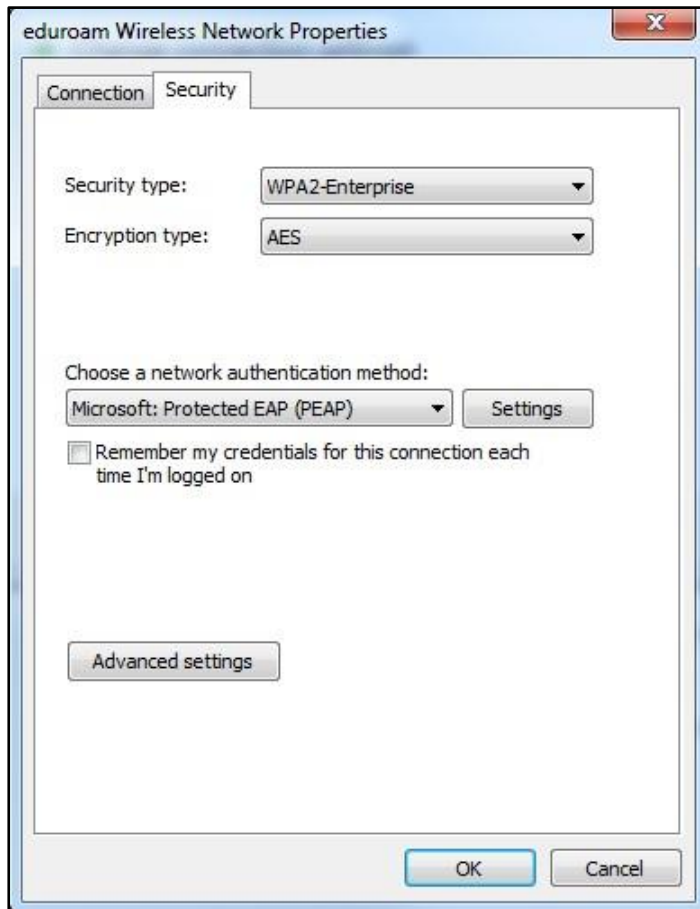
12. Deselect the option "Automatically use my Windows...". Then click OK.



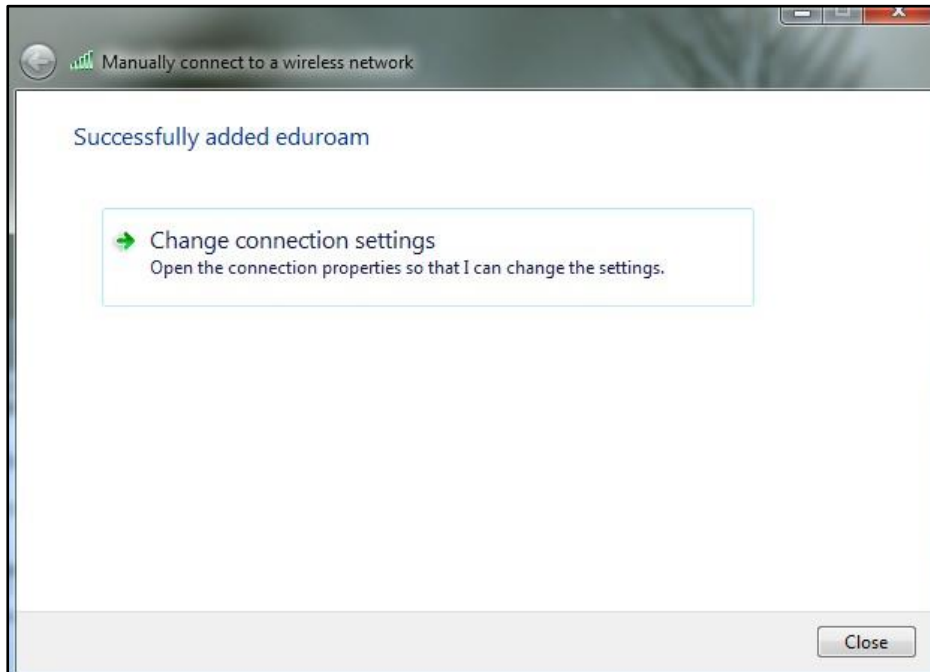
13. After clicking OK you will get back to this dialouge box. Click OK.



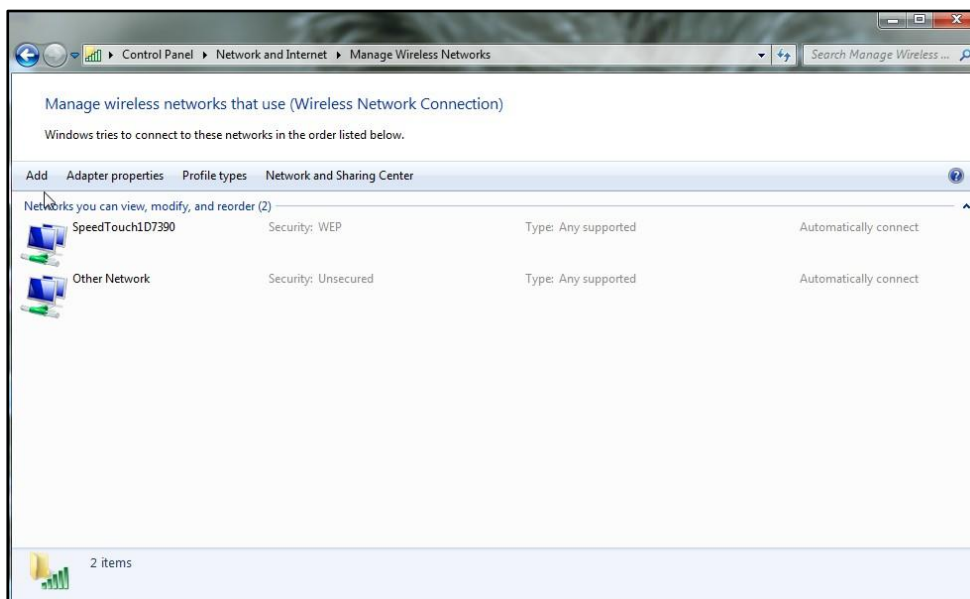
14. Now you will be back in this dialouge box. Click OK.



15. And now you can see this dialouge box again. Click Close.



16. Back in this dialouge box just close it by clicking the X in the upper wright corner.
Done!



Remember – when you connect to the eduroam network you must log on using this format: [username]@ad.slu.se