



LTV faculty's development and successes over 20 years - highlights

Dean Christina Lunner Kolstrup
LTV-Faculty, SLU 240829



General reflections

- First of all.....
- Then a lot of fantastic achievements!
- Impossible to remember, capture and mention all!
- Some highlights/achplock today.....
- A day to be proud
- And please - take the opportunity during lunch to make your footprint creating and visualizing our 20 years of history as a separate faculty.



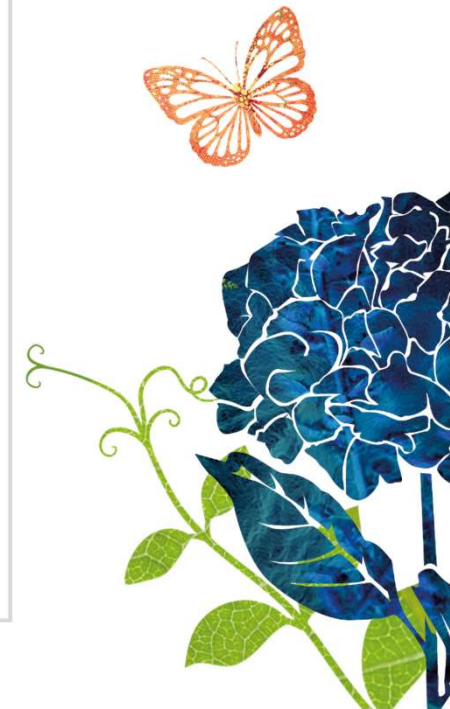
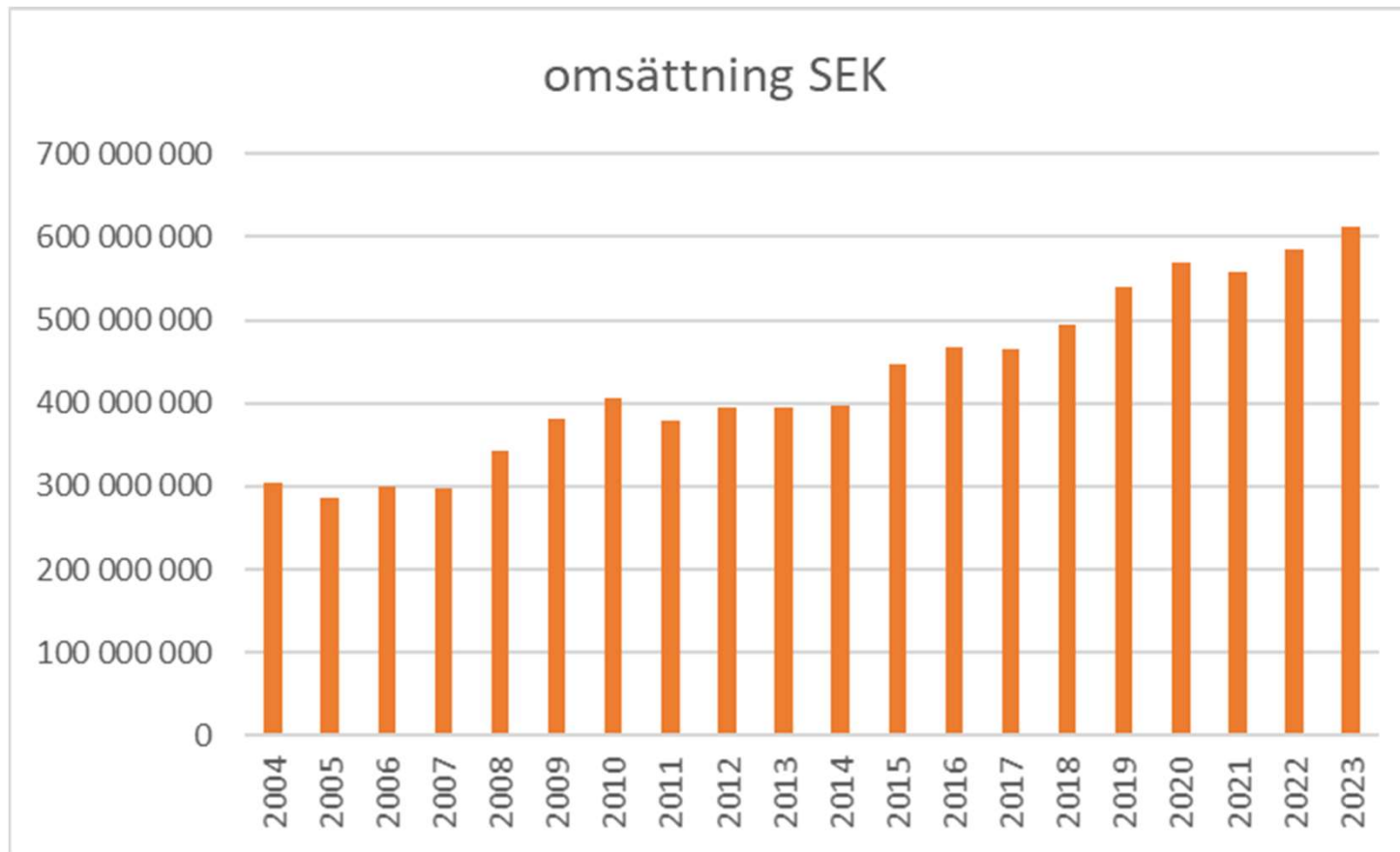
- **SLU a young university** with with old ancestry (1977 fusion of Lantbrukshögskolan, Skogshögskolan och Veterinärhögskolan samt Skogsmästarskolan i Skinnskatteberg och Veterinärinrättningen i Skara)
- 2004 fakulteten för landskapsplanering, trädgårds- och jordbruksvetenskap (**LTJ**)
- 2014 fakulteten för landskapsarkitektur, trädgårds- och växtproduktionsvetenskap (**LTV**)
- In 2017, SLU celebrated **40th anniversary** and 2024 our faculty celebrate **20 years anniversary**



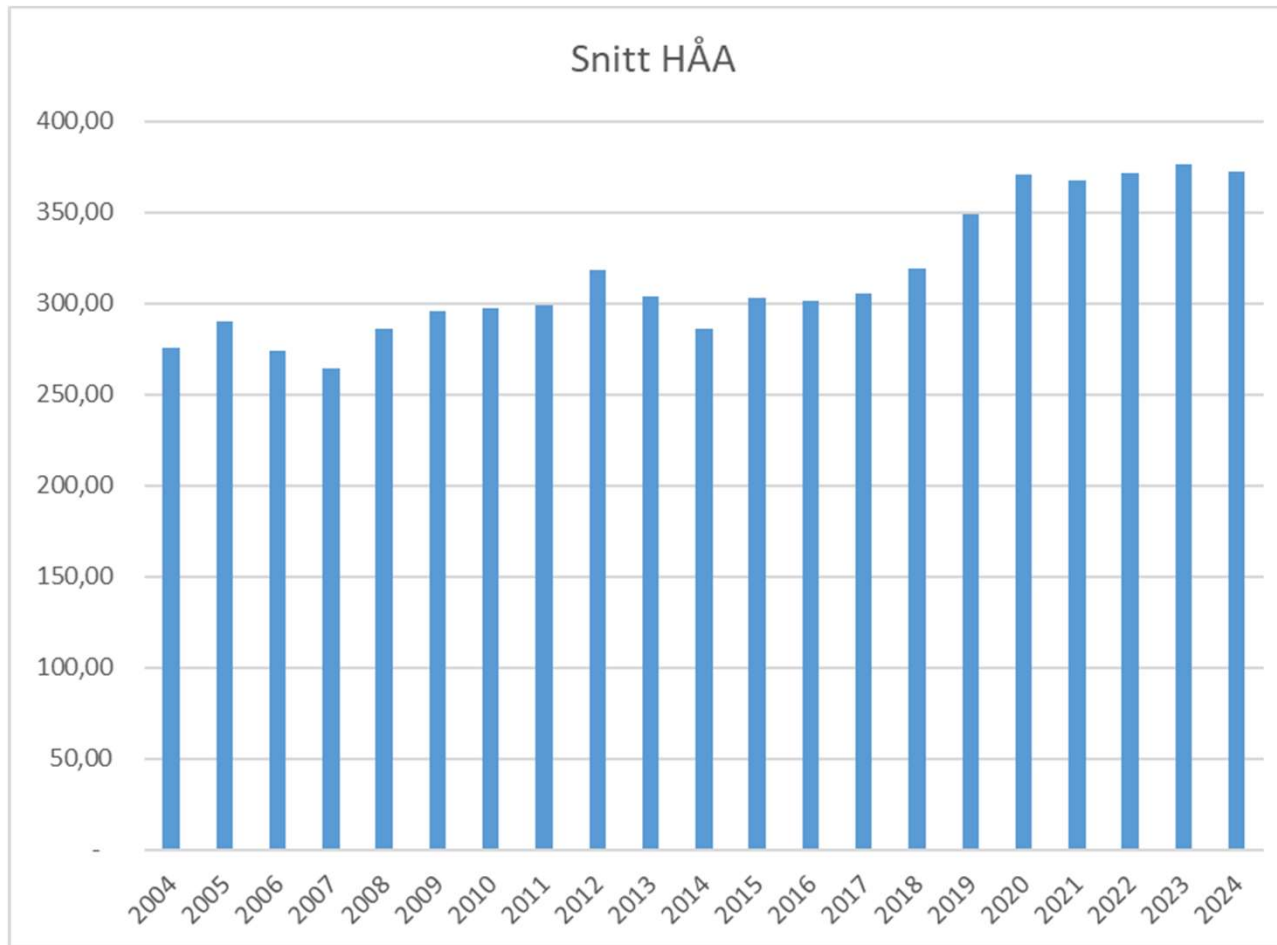
- **Strengthened** Landscape, Horticulture and South Swedish agriculture's **presence** at SLU
- The placement of a dean in Alnarp **strengthened SLU's campus in the south**
- **8 focus areas** - signal of a desire to increase cooperation between the units – later became **6 departments**
- The latest faculty reform – **a number of FGIs** were formed with the aim of refining the faculties' profile areas (Lark became part of LTV, BT Animals were handed over to VH (later returned)
- **Striking** challenges 2004 more or less the same 2024 – with modifications!



Development of turnover from 2004 to 2023

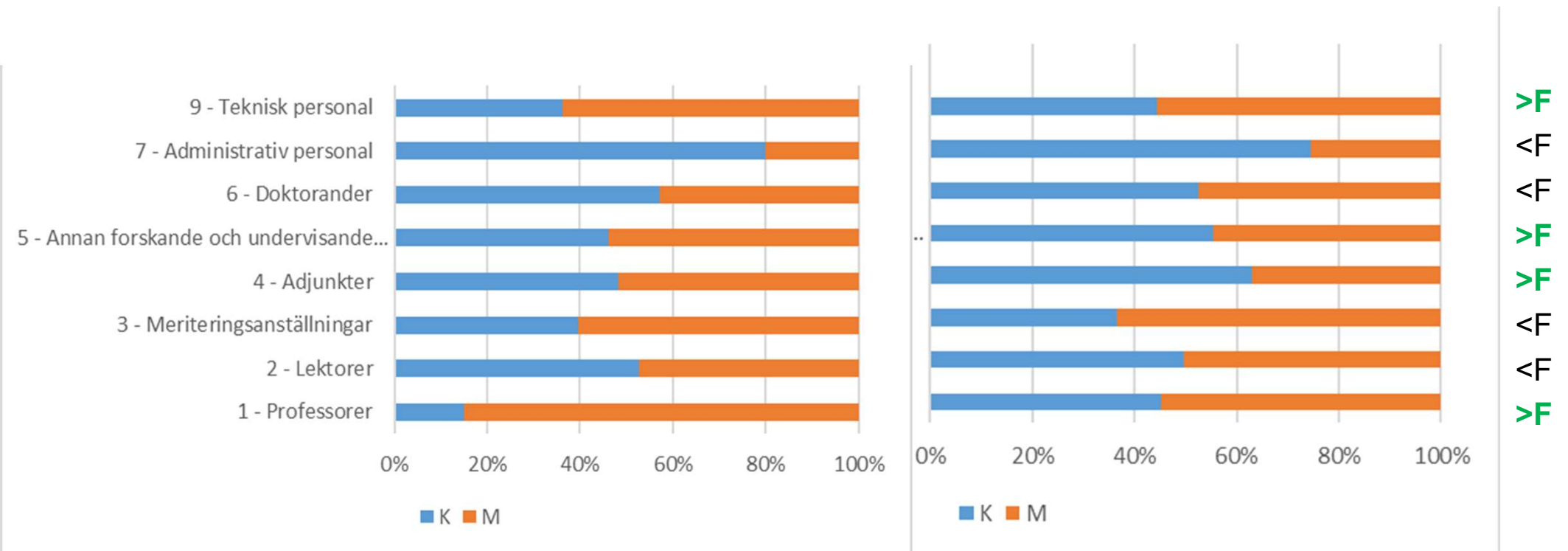


Development human capital at LTV 2004 to 2024 August





Development gender distribution 2004 and 2023



Development education 2024-2024

- 2005-2008: The magisterprogram **Urban Forestry Urban Greening** (UFUG) together with KVL
- 2005: **Trädgårdsingenjörprogrammet** divided into 3 specializations: marknad, odling och design (tvååriga yrkesprogram).
- 2007/2008: First year with the new **Bologna**, dvs 3+2 system (kandidatexamensarbete även för de 5-åriga programmen).
- 2009: Masterprogrammet Urban Landscape Dynamics (ULD) replaced by masterprogrammet **Landscape Architecture** (LAM)
- 2009: Masterprogrammet "**Hållbar stadsutveckling – ledning, organisering och förvaltning**" in collaboration with MAU



- 2010: Masterprogrammet **Agroecology**
- 2011: **Trädgårdsingenjör: marknad** – kandidatprogram receives the last batch of students.
- 2014: **New Utbildningsorganisation** vid SLU (independent from faculties).
Grundutbildningsrådet (GUR) centralt replaced by Utbildningsnämnden (UN), locally, Grundutbildningsnämnden (GUN) replaced by Programnämnden (PN) med Utbildningsnämnden som huvudman (the old programutskotten ceases but is partially resurrected with the program board's working groups in 2019)
- 2015: Magisterprogrammet Natur, hälsa och trädgård replaced by the masterprogrammet **Outdoor Environments for Health and Well-being (OHW)**
- 2017: **Final year admission** to the Horticulture program followed by the masterprogram Horticultural Science
- 2017-2021: **SLU:s fördubblingsprojekt** with the goal to double the number of students 2027 related to 2017!

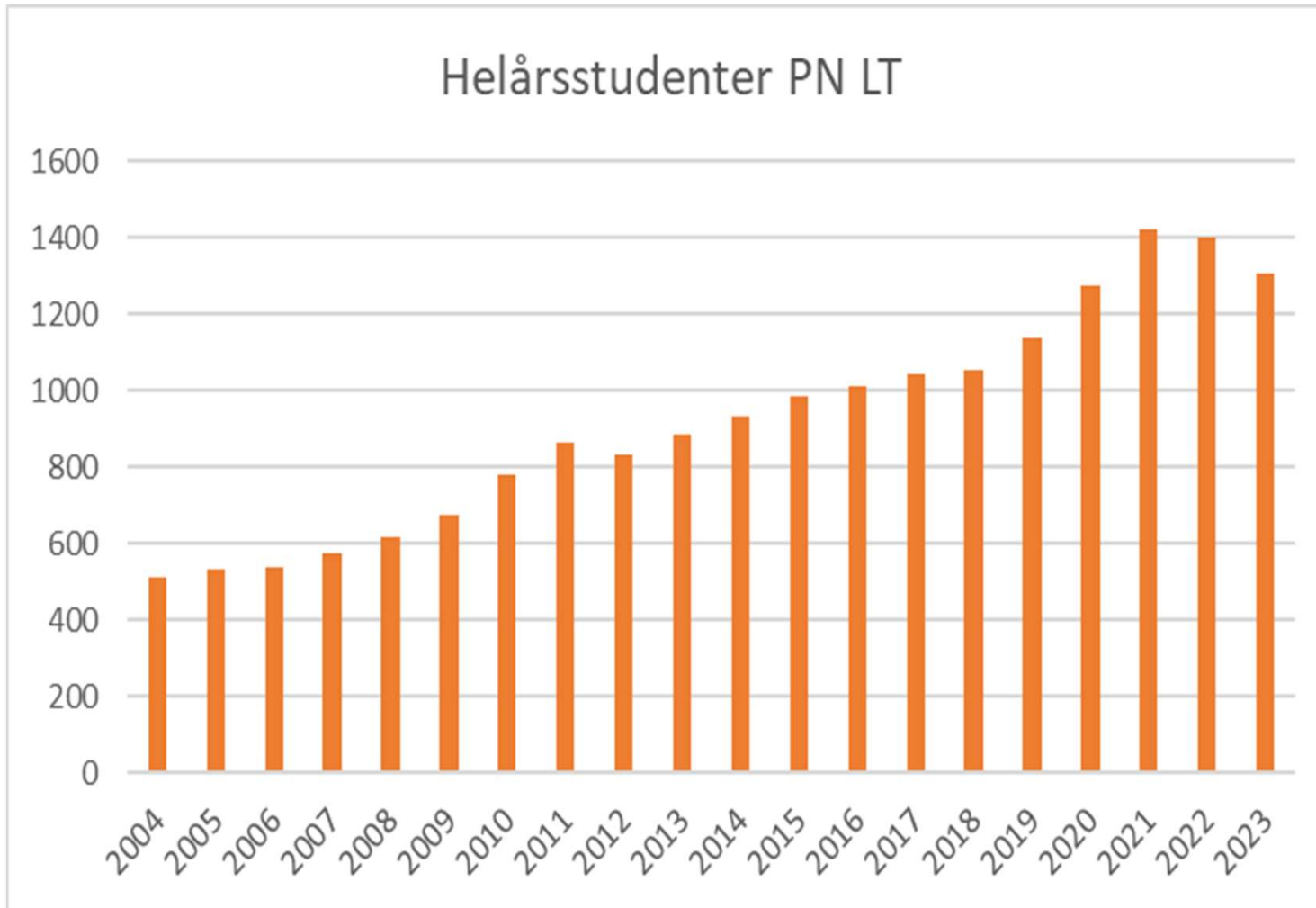




- 2021: two new programmes **Food and Landscape** (master) and the English bachelor programme **Forest and Landscape** (PN-S).
- 2018-19: **Expansion in Ultuna**, masterprogramme **Landscape Architecture for Sustainable Urbanisation** followed by a 3-year Landskapsingenjörsprogram 2019.
- 2020: Masterprogrammet **Plant Biology for Sustainable Production** changes from PN-S to PN-LT
- 2021 **Trädgårdsingenjörsprogrammet - odling resp. Trädgårdsingenjörsprogrammet - design** get the status as 3-year yrkesprogram
- 2025: If our vice-chancellor decides in autumn 2024 - **Lantmästarprogrammet** will be administrated by PN-LT from June 2025.
- **Throughout the period**, increased digitization with more computer rooms and new programs for course communication. SLUnik, Fronter and now Canvas.



Development students 2004 to 2023



Development – examples external funded research projects

- **SASI-SPI** (*EU*)
- **Nextfood** (*EU*)
- **PROTECTA** (*EU*)
- **ICON** (*EU*)
- **Säkert Bondfornuft** (*governmental*)
- **SLU Grogrund** (*governmental*)
- **TC4F - Trees and Crops for the Future** (*governmental*)
- **Sites/Lönnstorp** (*VR*)
- **ICE3** (*VR*)
- **Framtidens oljeväxter** (*SSF*)
- **ScanOat** (*SSF*)
- **Tillväxt Trädgård** (*SJV och partners från näringen*)
- **Kunskapsnav** inom företagsledning och entreprenörskap (*SJV*)

Projects >10 milj kr;
OBS! not complete list
covering all projects

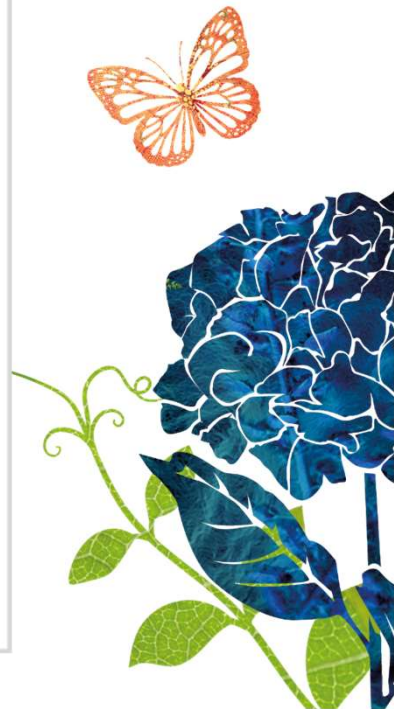
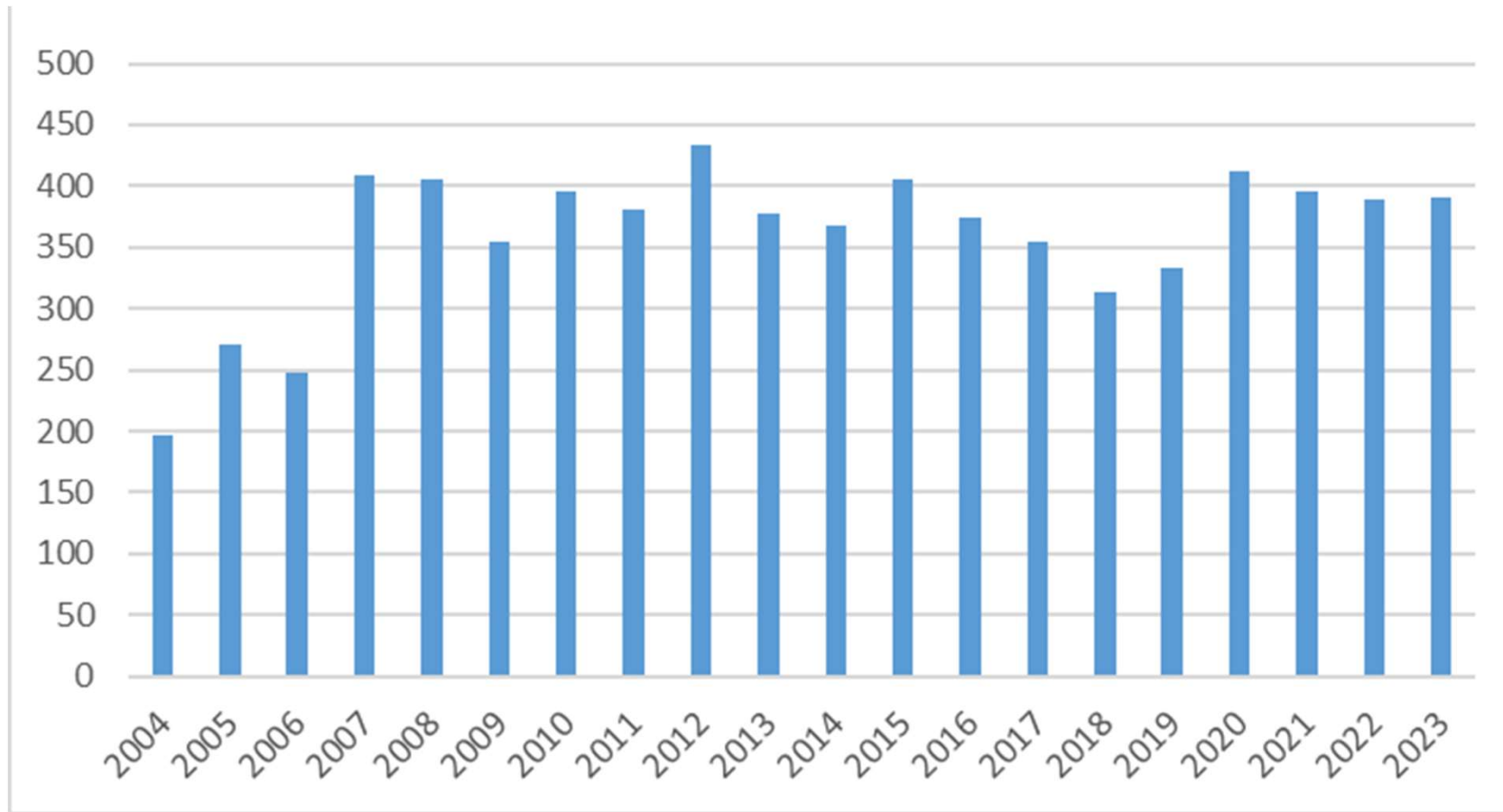




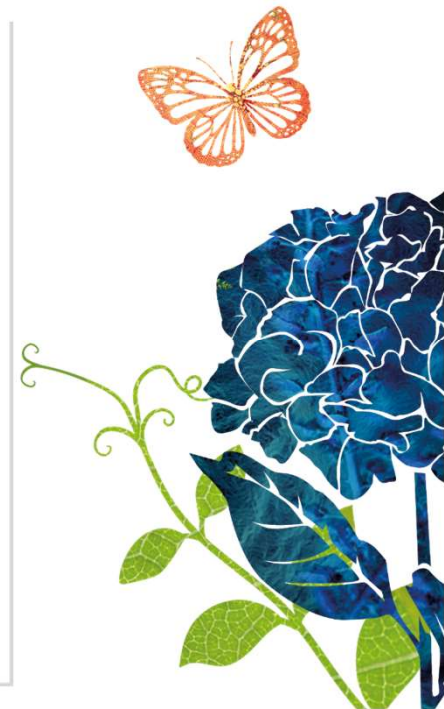
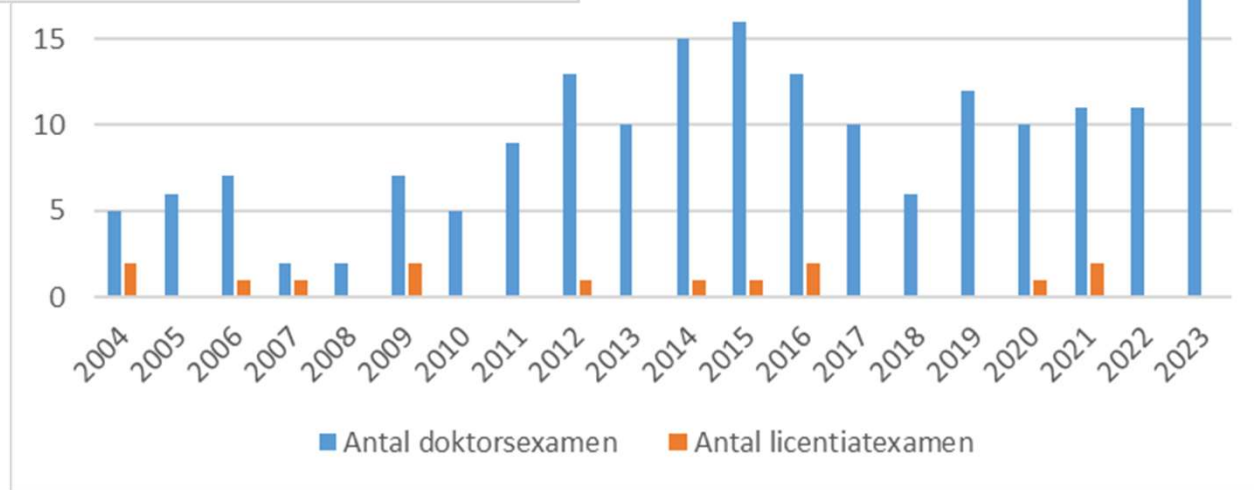
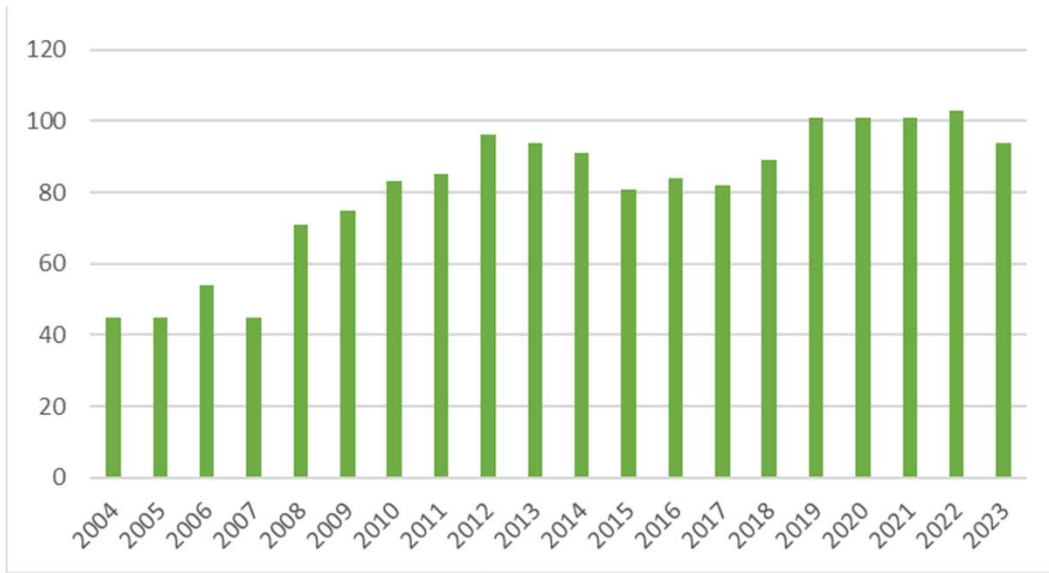
- **Biotechnology for Environmentally Safe and Sustainable Food Security** and Green Development of Ethiopia (*Sida*)
- **Mistra Biotech** (*Mistra*)
- **BSRC** (Energimyndigheten)
- **LAND-PATHS** (Naturvårdsverket)
- **Understanding the cross-kingdom movement of small RNAs in plant-pathogen interactions...** (*Novo Nordisk Foundation*)
- **Rehabträdgården** (*Region Skåne och Arbetsförmedlingen*)
- **Välfärdens landskap och den täta staden** (*FORMAS*)
- **Green infrastructure and urban diversity**
- **När kommunerna sätter forskningsagendan** (4 kommundoktorander (6 skånska kommuner: *Malmö, Staffanstorp, Lomma, Östra Göinge, Hässleholm och Kristianstad*))
- **Linné funding** (chemical ecology)
- **Max Planck Center** next Generation Insect Chemical Ecology (nGICE) (*LU, Max Planck and SLU*)



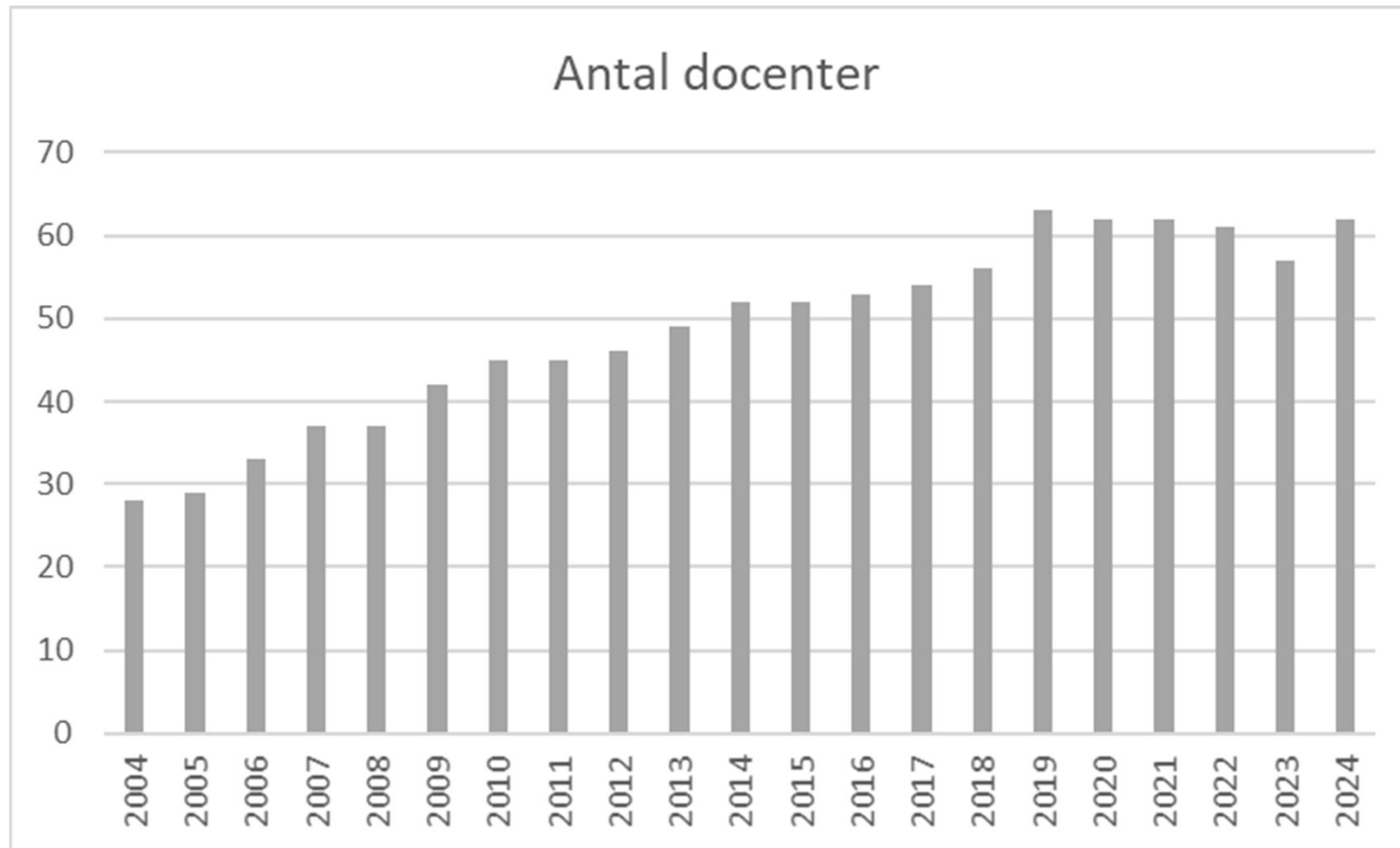
Development research 2004-2023 - publications



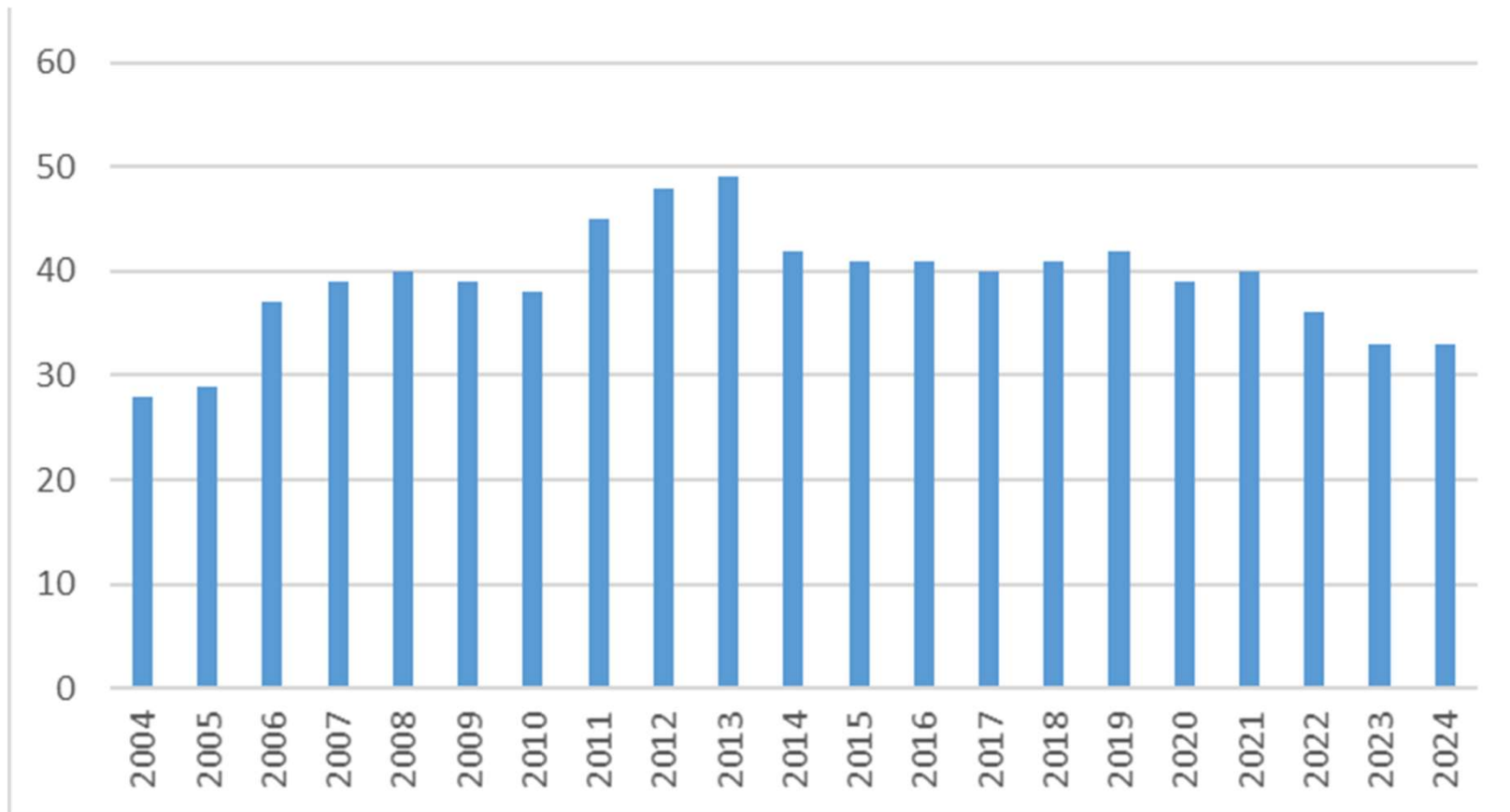
Development registered and graduated PhD students



Development docents 2004 to August 2024



Development professors 2004-2024



Honorary doctors at LTV - 29 honorary doctors!

- 2023 - Tree expert Björn Embrén, S; professor Emmanuelle Jacquin-Joly, FR
- 2020-2022 - Entreprenör Rune Andersson, S; professor Sarah Gurr, GB
- 2019 - Statsarkitekt Helena Bjarnegård, S
- 2018 - Professor Vera Bitsch, DE
- 2017 - Professor Edgar B. Cahoon, US; Professor Catharine Ward Thompson, GB
- 2016 - Professor Bill S. Hansson, DE
- 2015 - Professor Charles Francis, US
- 2014 - Guillermo "Gil" Penalosa, CA
- 2013 - Dr Martine Dorais, CA
- 2012 - Dr Mark Peoples, AU; Dr Mahmoud Solh, SY
- 2011 – Dr Barbara Lee, US; professor Kornelia Smalla, DE
- 2010 - Dr Alba Marina Cotes Prado, CO; Dr Kim E. Hummer, US
- 2009 - Professor Jörg Harting, DK; professor Anne Whiston Spirn, US
- 2008 - f.d. rektor Bent Schmidt-Nielsen, DK
- 2007 - Professor Peter Shewry, GB
- 2006 - Professor Walter Wohanka, DE; professor Richard Stiles, AT
- 2005 - Professor Anna-Maria Angioy, IT; avdelningsledare Sören Pedersen, DK



- **Partnerskap Alnarp** started (2004) and **Movium** 40 years anniversary (2020)
- The collaboration unit **Omvärld Alnarp** formed in 2007 to face the winding down of the SLU joint organization SLU Omvärld
- **Odlingsenheten**, enheten för samverkan och utveckling (**SoU**) and **common HR & economic** administration (2004/2005)
- **Trädgårdslabbet, Landskapslabbet, Magnoliaparken och Rehabträdgården** (2004/2005)
- **Alnarps Mellangård** – salmonella (2007)
- The new **Biotrone** November 2016
- **SLU Urban Futures** (2013)
- **Number of strategies** – well 😊 At least five....
- **GIP** (Green Innovation Park) 2017 (AH ownership 2024)



- **RådNu** (Skara) part of the faculty (2020)
- Student initiative **Alnarp Agroecology Farm** (2021)
- Total melt-down – **the pandemic** (2020-2022)
- **First Associate Senior Lecturer/Assistant Professor** (now professor Johan Stenberg; 2014)
- **First professor emeritus** (professor Paul Jensen; 2016)
- **First teacher of excellence** (Professor Marie Bengtsson; 2015)
- **First career grant for researchers** (Professor Rickard Ignell; 2017)
- **First PhD student examined** (Mats Gyllin: 2004)
- **First honorary doctors** at LTV 2004 (Bengt Holgersson, landshövding; Karl Evert Flinck, fd forskningschef; Ib Asger Olsson, landskapsarkitekt, DK)



- **4 SLU infrastructure projects** - (Lipid Analysis Laboratory, Ida Lager; SLU Bioimaging Platform, Laura Greenville Briggs; Instrumentation for identification of chemical messenger compounds, Göran Birgersson and Sensola, Caroline Hägerhäll)
- **4 deans through** the years (Roland von Bothmer, Tiina Sarap, Håkan Schroeder, Christina Lunner Kolstrup)
- **4 vice-chancellors** though the years (Ann-Christin Bylund, Lisa Sennerby Forsse, Peter Högberg, Maria Knutson-Wedel)
- **33 head of departments** thorough the years
- **5 faculty directors** through the years (Moa Haga, Karin Warfvinge, Ola Melin, Margit Nothnagl, Håkan Sandgren)
- **Campus, campus development and train stop** More actual than ever! (2027-2028)



..... Looking back and until now.....



You and your colleagues achieved this!

- be **proud** and look forward to **our future fantastic achievements** the next 20 years



ENJOY

**– relax and have
fun today 😊**



Faculty management 2004-2024

- Bill Hansson, Ylva Hillbur, Rickard Ignell
- Tomas Lundborg, Thomas Bryngelsson, Anders Carlsson, Tim Delshammar
- Jan-Erik Englund Peter Lundkvist, Stefan Hellmer, Christina Lunner Kolstrup och Mats Gyllin
- Håkan Schroeder, Kristina Santén, Ida Andersson
- Cecil Konijnendijk, Caroline Hägerhäll, Ingrid Sarlöv Herlin, Gunilla Lindholm Erik Skärbäck, Tiina Sarap, Gunnar Sorte, Caroline Dahl, Anders Larsson
- Cecilia Waldenström, Lars Johansson, Stina Powell
- Håkan Asp, Jan Erik Matsson, Eva von Wachenfeldt, Erik Steen Jensen, Håkan Schroeder, Linda Tufvesson, Hanna Sassner

