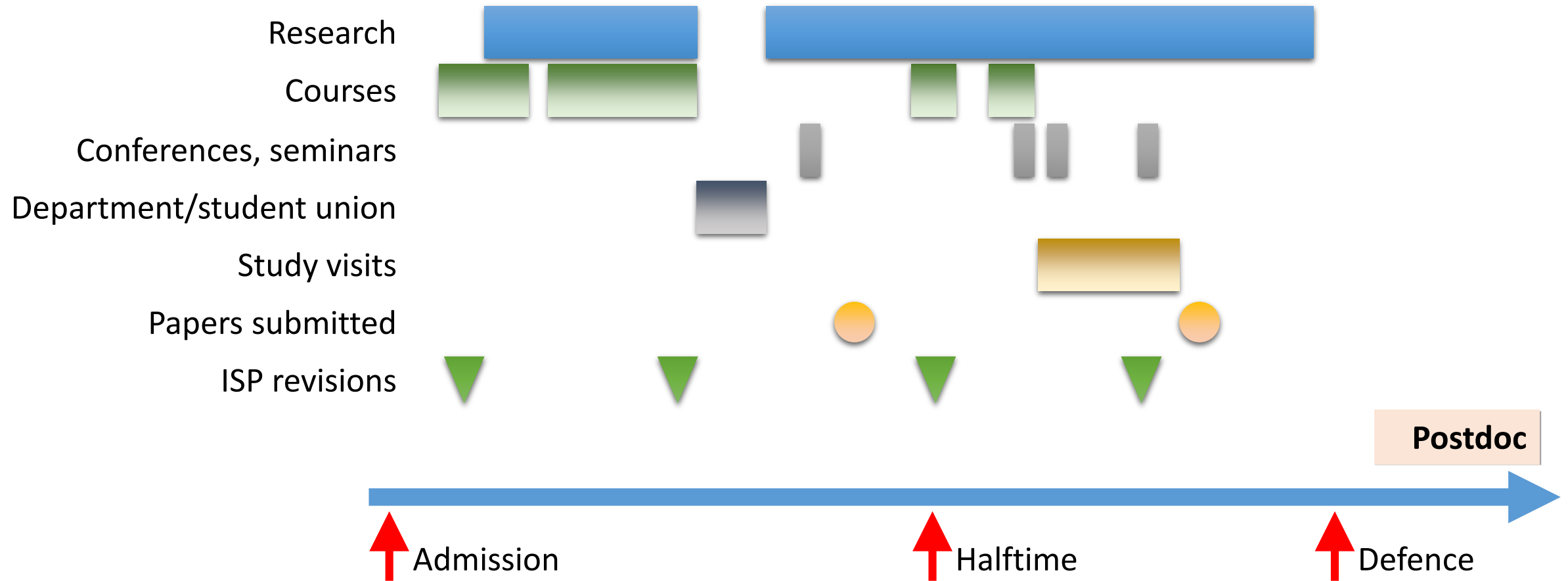


Introduction for new doctoral students

General information 20 May 2022

- Elisabet Lewan
Department of Soil and Environment, NJ-faculty
Lisbet.Lewan@slu.se
- Carl-Gustaf Thulin
Department of Anatomy, Physiology and Biochemistry, VH-faculty
- Carl-Gustaf.Thulin@slu.se

Your doctoral education



Degree outcomes

- Defined by the [Higher Education Ordinance \(HEO\)](#)
(Swedish Council for Higher Education/Ministry of Education and Research)
- [PhD](#) and [Licentiate](#) outcomes, common to all doctoral students:
 - Knowledge and understanding
 - Competence and proficiency
 - Judgement and approach



SLU public website on doctoral education



Sveriges lantbruksuniversitet
Swedish University of Agricultural Sciences

[SVENSKA](#) | [STUDENT WEB](#) | [STAFF WEB](#) | [LIBRARY](#) | [UDS](#) | [SEARCH EMPLOYEE](#)

[Education](#) [Research](#) [Environment](#) [Collaboration](#) [About SLU](#)

Search

Doctoral education

[Application and admission to doctoral studies](#) [Doctoral studies at SLU](#) [Thesis and public defence](#) [Externally employed doctoral students \(LivsID\)](#)

[startpage slu / education / programmes & courses / Doctoral education](#)

Doctoral education at SLU

The Swedish University of Agricultural Sciences (SLU) is one of Sweden's top research universities, with an extensive range of research degrees on offer. As a doctoral candidate, you will be a part of a supportive research community and an exciting and challenging research culture.

[How to apply](#)

[Are you already PhD-student or supervisor at SLU?](#)



To become a doctoral candidate

SLU staff website on doctoral education

Staff Web
Information and services for employees at SLU

SVENSKA | SLU.SE | STUDENT WEB | LIBRARY | UDS | SEARCH EMPLOYEE

SLU

My employment | Support & services | Organisation & governance | Targeted info

Doctoral education

Recruitment and admission | Doctoral education content | Thesis/Public defence | Degrees | Guidelines and forms | Contact

start staff web / support & services / education / Doctoral education

Doctoral education

On these pages you will find information for doctoral students or staff working with doctoral education.

Recruitment and admission

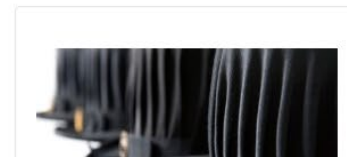
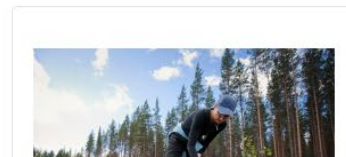
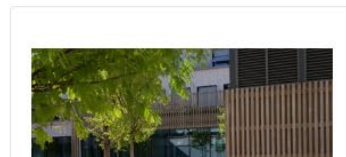
Doctoral education content

Thesis/Public defence

Doctoral student ombudsman

Guidelines and forms

Contact



SLU doctoral education portal



Staff Web
Information and services for employees at SLU

SVENSKA | SLU.SE | STUDENT WEB | LIBRARY | UDS | SEARCH EMPLOYEE

My employment | Support & services | Organisation & governance

Targeted info

Search

start staff web / targeted info / support for target groups / Doctoral education support

Information for doctoral students and supervisors

LAST CHANGED: 05 NOVEMBER 2019

This doctoral education portal lists links to webpages with information for doctoral students, supervisors or other staff working with doctoral education at SLU. The information is collected partly from different parts of the SLU staff web, but also to other webpages.

You can also find general information about [doctoral education at SLU at the staff web](#).

Guidelines and objectives +

Admission of a new doctoral student +

Introduction of new doctoral student +

Economy and employment +

Illness and healthcare +

Doctoral education - content and prerequisites +

CONTACT

PRINT

LISTEN

SHARE

NJ faculty website on doctoral education

Staff Web
Information and services for employees at SLU

SVENSKA | SLU.SE | STUDENT WEB | LIBRARY | UDS | SEARCH EMPLOYEE

My employment Support & services Organisation & governance Targeted info

NJ Faculty

For all faculty employees Research, Education, EMA

start staff web / targeted info / faculty information / nj faculty / research, education, ema / Doctoral Education at the NJ faculty

Doctoral education (NJ faculty)

LAST CHANGED: 12 MARCH 2020

Here you can find information about the organization and procedures of doctoral education at the NJ-faculty. You will also find contact information to persons who can give advise and support.

The Faculty Board has the overall responsibility for the scientific quality of doctoral education and that the education is carried out in accordance with approved guidelines. The Faculty Board has delegated a number of issues and decisions related to doctoral education to the Doctoral Education Committee (Fun-NJ), the Vice Deen for Doctoral Education and in some cases to the head of department, please read more under "Who decides what" below.

For rules, guidelines, forms etc, [please see the staff web](#) or:

- [Doctoral student and supervisor support](#)

Fun-NJ meetings



- CONTACT
- PRINT
- LISTEN
- LINKS
- SHARE

Contacts at NJ faculty

Education officers:

Eva Andersson Björkman
Faculty programme director
(utbildningsledare)

e-mail

eva.andersson.bjorkman@slu.se

phone

018-671672,
072-5303773



Charlotta Eriksson
Educational administrator
(utbildningshandläggare)

charlotta.eriksson@slu.se

073-0494881



Directors of PhD-studies:

Elisabet Lewan
Robert Glinwood

lisbet.lewan@slu.se

robert.glinwood@slu.se

018-672629

018-672342

Vice Dean for PhD-education:

Petra Fransson

petra.fransson@slu.se

018-671864



Contact persons at departments within NJ

Department

Aquatic resources

Ecology

Economics

Energy and Technology

Molecular Sciences

Soil and Environment

Agricultural Research for Northern Sweden

Forest Mycology and Plant Pathology

Urban and Rural Development

Aquatic Sciences and Assessment

Plant Biology

Crop Production Ecology

Contact person

[Magnus Huss](#)

[Maartje Klapwijk](#)

[Gordana Manevska Tasevska](#)

[Åke Nordberg](#)

[Monika Johansson](#)

[Elisabet Lewan](#)

[Johanna Wallsten](#)

[Anders Dahlberg](#)

[Ann Grubbström; Klara Fischer](#)

Martyn.Futter@slu.se

[Mattias Thelander](#)

[Robert Glinwood](#)

VH Faculty website on doctoral education

Research education at the VH Faculty

LAST CHANGED: 29 OCTOBER 2021

The doctoral education committee at the VH faculty (FUN-VH) handles matters related to research education and have regular meetings approximately once a month during the semesters. For more information on meeting dates please see [VH's meetings overview](#).

All material must be sent to FUN at least 2 weeks before each meeting. Please observe that applications for dissertations planned to early autumn (Aug- Oct 25) need to be handled at the last spring meeting.

Applications should be sent to the secretary of FUN: FUN-VH, Att. Anette Wichman, Box 7084, or electronically by e-mail to fun-vh@slu.se.

Current issues >

Recruitment and admission >

Research education subjects >

Halftime follow up >

Contacts at VH faculty

- VH Vice Dean and FUN chairperson
Lena Lidfors, lena.lidfors@slu.se, 0511-67 215
(Professor, Dept Animal Environment and Health, Skara)
- VH Director of Studies
Carl-Gustaf Thulin, carl-gustaf.thulin@slu.se, 070-5645358
(Dept Anatomy, Physiology and Biochemistry)
- VH Research coordinator and FUN secretary
Anette Wichman, fun-vh@slu.se, 018-67 23 16



Contact persons at departments within VH

(to be updated ?)

[Sara Wernersson](#) – Anatomy, Physiology and Biochemistry

[Stefan Örn](#) – Biomedical Sciences and Veterinary Public Health

[Sofia Mikko](#) – Animal Breeding and Genetics

[Katarina Arvidsson Segerkvist](#) – Animal Environment and Health

[Anna Skarin](#) – Animal Nutrition and Management

[Ylva Sjunnesson](#) – Clinical Sciences

[Johanna Wallsten](#) – Agricultural Research for Northern Sweden

Courses, seminars, conferences

- Basic courses in transferable skills and subject-specific courses
- Courses offered by SLU and by other universities, e.g. the [Nordic Forestry, Veterinary and Agricultural University Network \(NOVA\)](#)
- [SLU course database](#)
- [SLU research schools](#)
- Networks, e-mail lists etc.

Research schools - NJ Faculty

- [Ecology – basics and applications](#)
- [Sustainable Systems for Food, Energy and Biomaterials \(SSFEB\)](#)
- [Focus on Soils and Waters](#)
- [Organism Biology](#)
- [Sustainable Biomass Systems](#)
- [Society and Landscape](#)
- [Social Science Perspectives on Sustainable Development](#)



Research school - VH faculty

- [Graduate School for Veterinary Medicine and Animal Sciences \(GS-VMAS\)](#)



Research school - S faculty

- [SILVA – Faculty of Forest Sciences Research School](#)



Research school at LTV faculty

- [SPIRA - Landscape Architecture, Horticulture and Crop Production Science](#)



Courses in statistics



Sveriges lantbruksuniversitet
Swedish University of Agricultural Sciences

[SVENSKA](#) | [STUDENT WEB](#) | [STAFF WEB](#) | [LIBRARY](#) | [UDS](#) | [SEARCH EMPLOYEE](#)

[Education](#) | [Research](#) | [Environment](#) | [Collaboration](#) | [About SLU](#)

Search 

Centre for Statistics

[startpage slu](#) / [centre for statistics](#) / Education






Courses in statistics

LAST CHANGED: 26 SEPTEMBER 2019

Our Ph.D. courses have strong data analysis components. As statistical software we use R, or R and SAS (in Uppsala). On completion of the course the participants should be able to conduct statistical analysis on their own data independently or with limited help from our consultants.

For the coming years the following courses in statistics are planned. For exact dates and information about application see our calendar. Course outside this schedule.



-  CONTACT
-  PRINT
-  LISTEN
-  LINKS
-  SHARE

Rules and guidelines

- [Higher education ordinance \(HEO\) 1993:100](#) (applies to all Swedish Universities)
- [Admission regulations for doctoral education 2018](#)
- [SLU guidelines for doctoral education 2019](#) (apply to all SLU-students)
- [Joint and double degrees](#)
- [Subjects and general study syllabuses](#) (more specific, differs between subjects)



General study plan (syllabus)

- One for each study *subject*, such as e.g. Biology, Soil Sciences, Economics....
- Details objectives and specific requirements regarding e.g. entry, courses, dissertation

Individual study plan (ISP)

- One for each student
- Details e.g. learning outcomes, supervisors, research, course work, financing, commitments, follow-up
- Dynamic tool, revised yearly
- Digitalized [ISP Portal](#)

Study visits and stays abroad

- Short visits, courses or conferences
- Longer visits at a scientific institution
- Funding:
 - Your project
 - [SLU travel grants and stipends](#), [VH scholarships](#), mobility support from research schools
 - External scholarships



Collaboration at the department

- Student, supervisor and department are all responsible
- Clarify: Aims and expectations
- Responsibilities and commitments – *who does what ?*
- Role of assistant supervisors varies greatly
- Communication and meetings – *who is responsible* for arranging ?
- If the education doesn't work ? (*Support?*)
- All students and all projects are unique
- Annual follow-up routines differ between departments

Rights and obligations

- Supervision during studies
- Request to change principal supervisor
- Doctoral students should:
 - Actively and independently pursue their studies and document the results so that a thesis can be presented
 - Continuously inform supervisors of educational, scientific and practical developments and propose changes
 - After consultation with the supervisor, take part in doctoral courses
 - Be well informed about SLU's rules and policies
- All SLU employees have [certain obligations](#)

Support

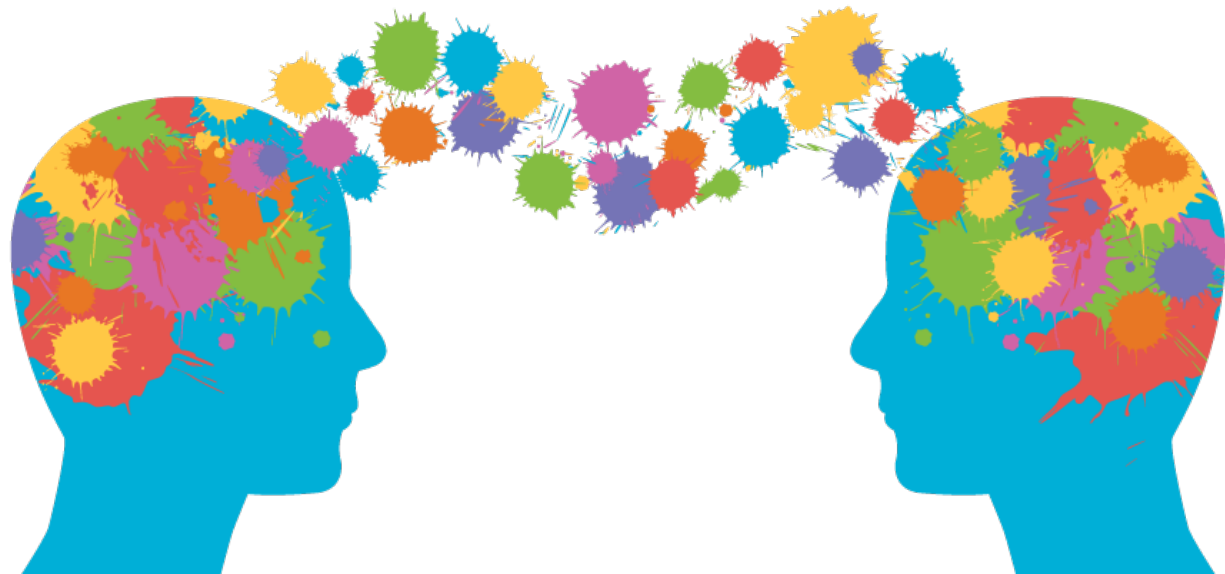
- Supervisors
- Department contact/director of studies, Faculty director of studies
- Head of section/ Line manager
- Other experienced researchers
- Fellow students, [PhD student Council](#), [PhD student handbooks](#)
- [Doctoral student counsellor](#)
- [Practical information and advice for living and working in Sweden](#)



Mentor

Any senior person inside or outside the university who helps:

- Widen perspectives
- Promote professional development
- Provide insight into societal institutions and companies
- Consider future career and build vision
- [Mentoring program](#)



A vibrant field of red poppies and white daisies. The poppies are the dominant color, with their bright red petals and dark centers. Interspersed among them are several white daisies with yellow centers. The background is a soft, out-of-focus expanse of more flowers, creating a sense of depth and a dreamy atmosphere. The lighting is bright, suggesting a sunny day.

Questions?