

SoilTrends-project

Comparison of Lucas and national soil monitoring

Objectives:

1. To determine temporal trends (2009-2018) of C, pH, K and P in Finnish agricultural soils
2. To explore the temporal variability in the measurements

National

Sampling in 1974, 1987, 1998, **2009** and **2018** (2028)

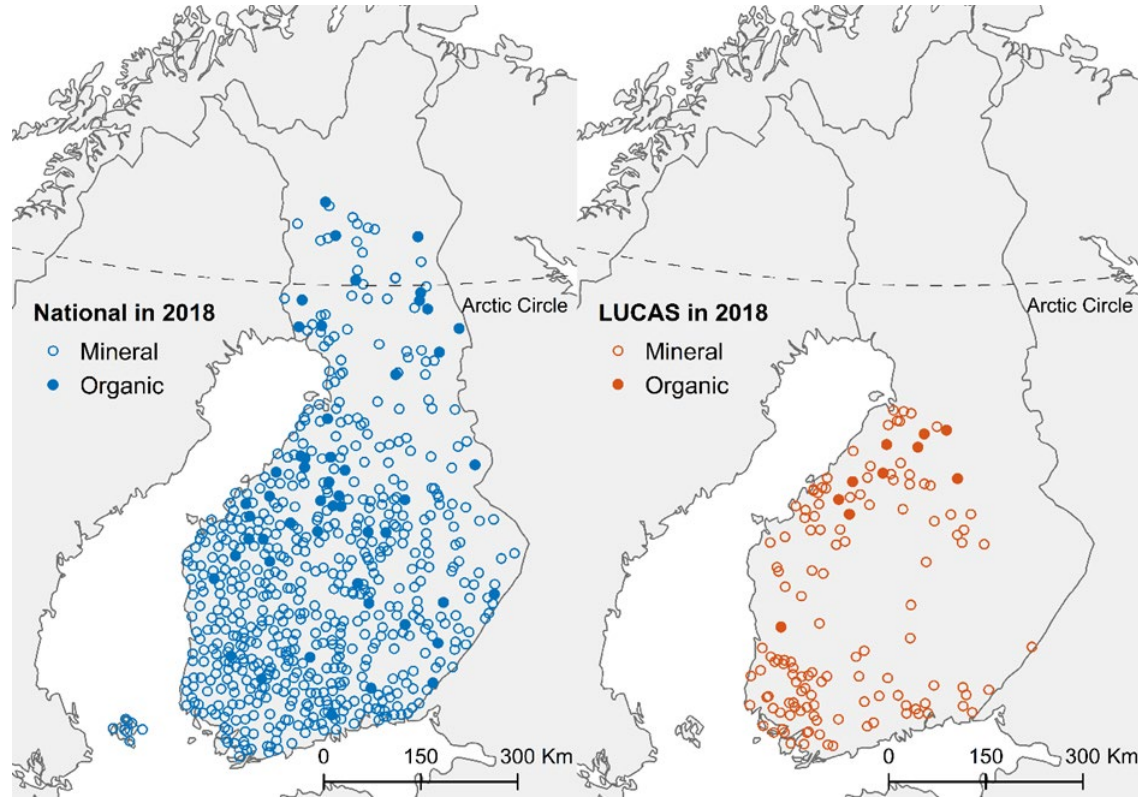
Number of sampling plots
620

Size of the sampling plot
10m*10m

>10 subsamples

Samples taken with soil
corer

Sampling depth 15 cm



Lucas

Sampling in **2009**, 2015 and **2018** (2022)

Number of sampling plots 134
(cropland)

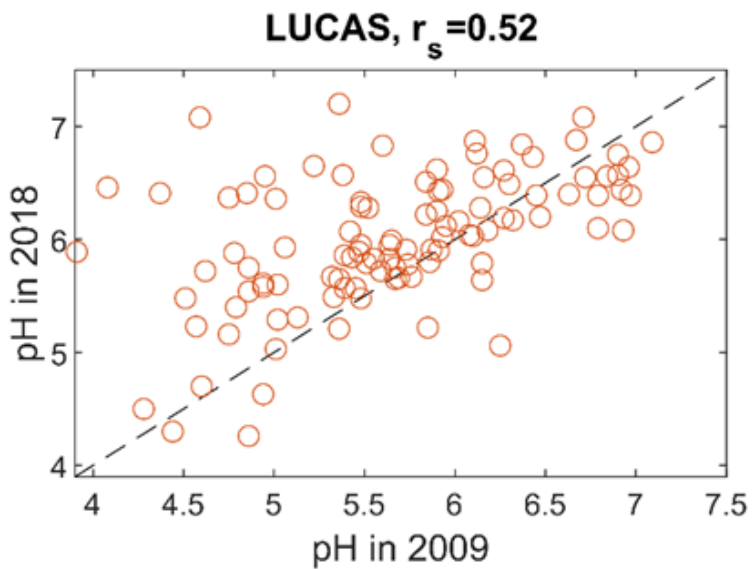
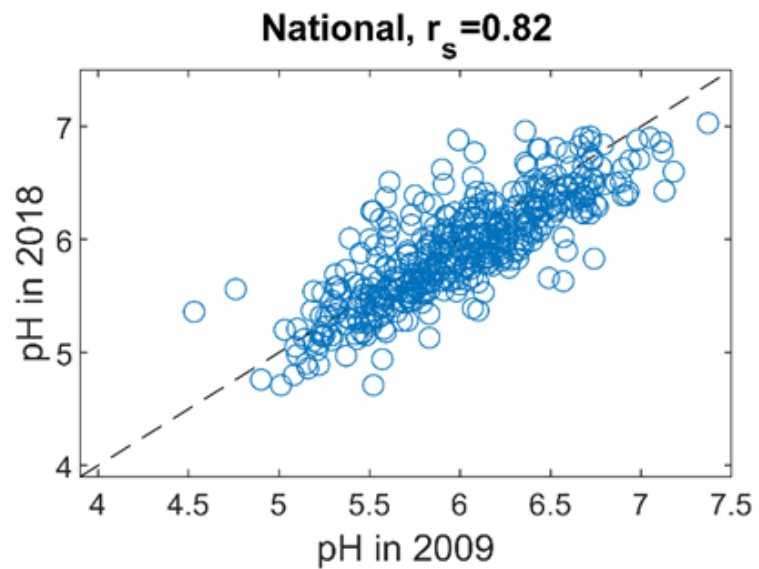
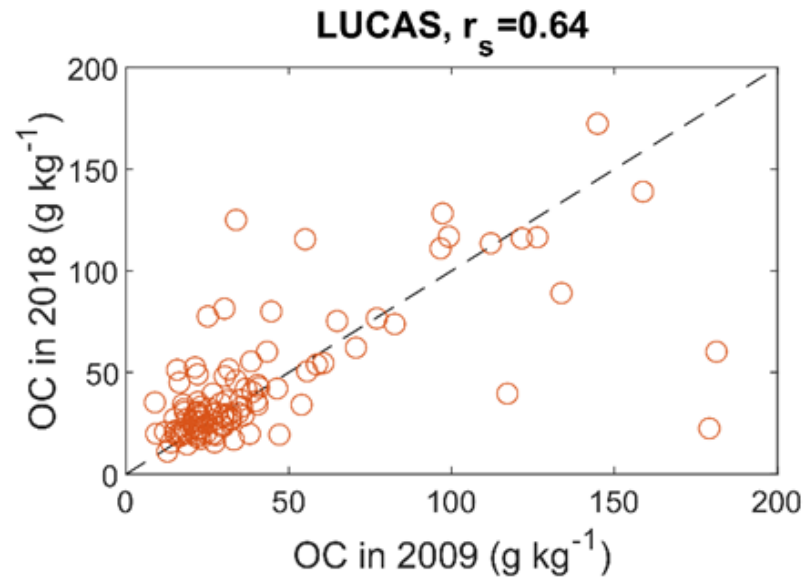
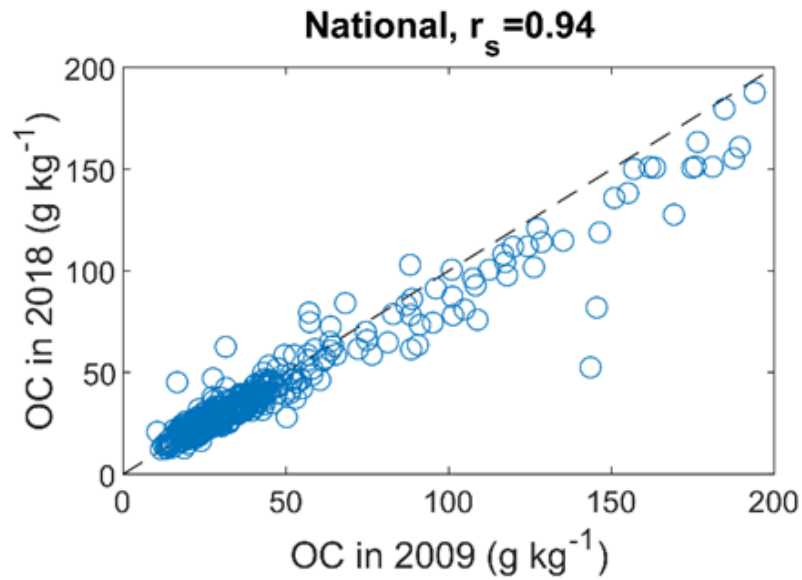
Diameter of sampling plot 4 m

5 subsamples

Samples taken with spade

Sampling depth 20 cm

Mineral soils

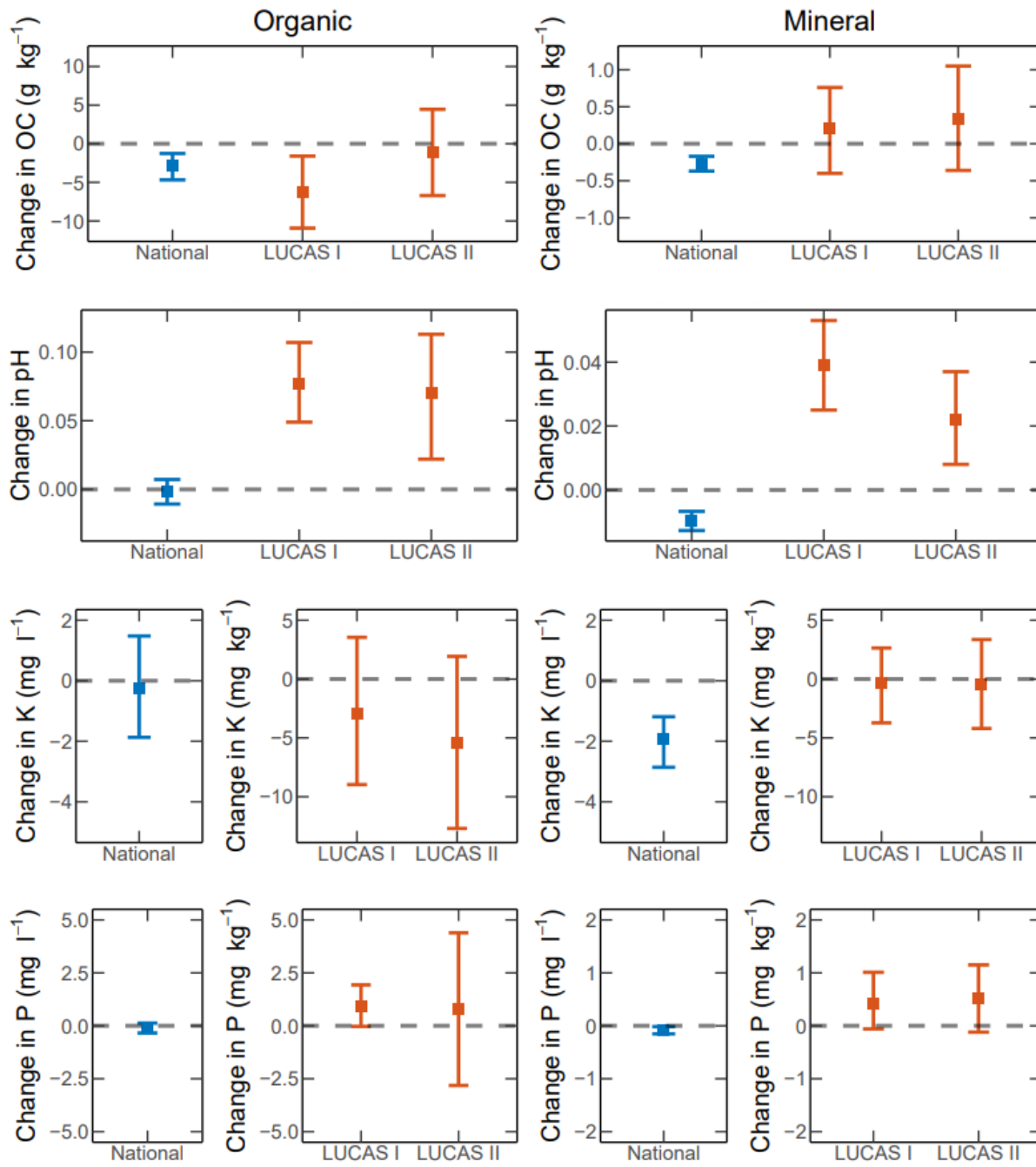


National, $r_s = 0.91$

LUCAS, $r_s = 0.65$

Why there is more scatter in Lucas than in national data?

- Location accuracy
- Sampling protocol
- Analysis
- Intra annual variation



Lucas has more scatter
 in the data +
 Lower number of
 sampling plots

 ->Wider confidence
 intervals

