



SCIENCE AND
EDUCATION **FOR**
SUSTAINABLE
LIFE

**SILVA - Faculty of Forest
Sciences Research School**
silva@slu.se

Board for doctoral education



SILVA - Faculty of Forest Science Research School

Dimitris Athanassiadis

Department of Forest Biomaterials and Technology

Navinder Singh

Department of Wildlife, Fish and Environmental Studies

Ylva Jonsson

Department of Forest Resource Management

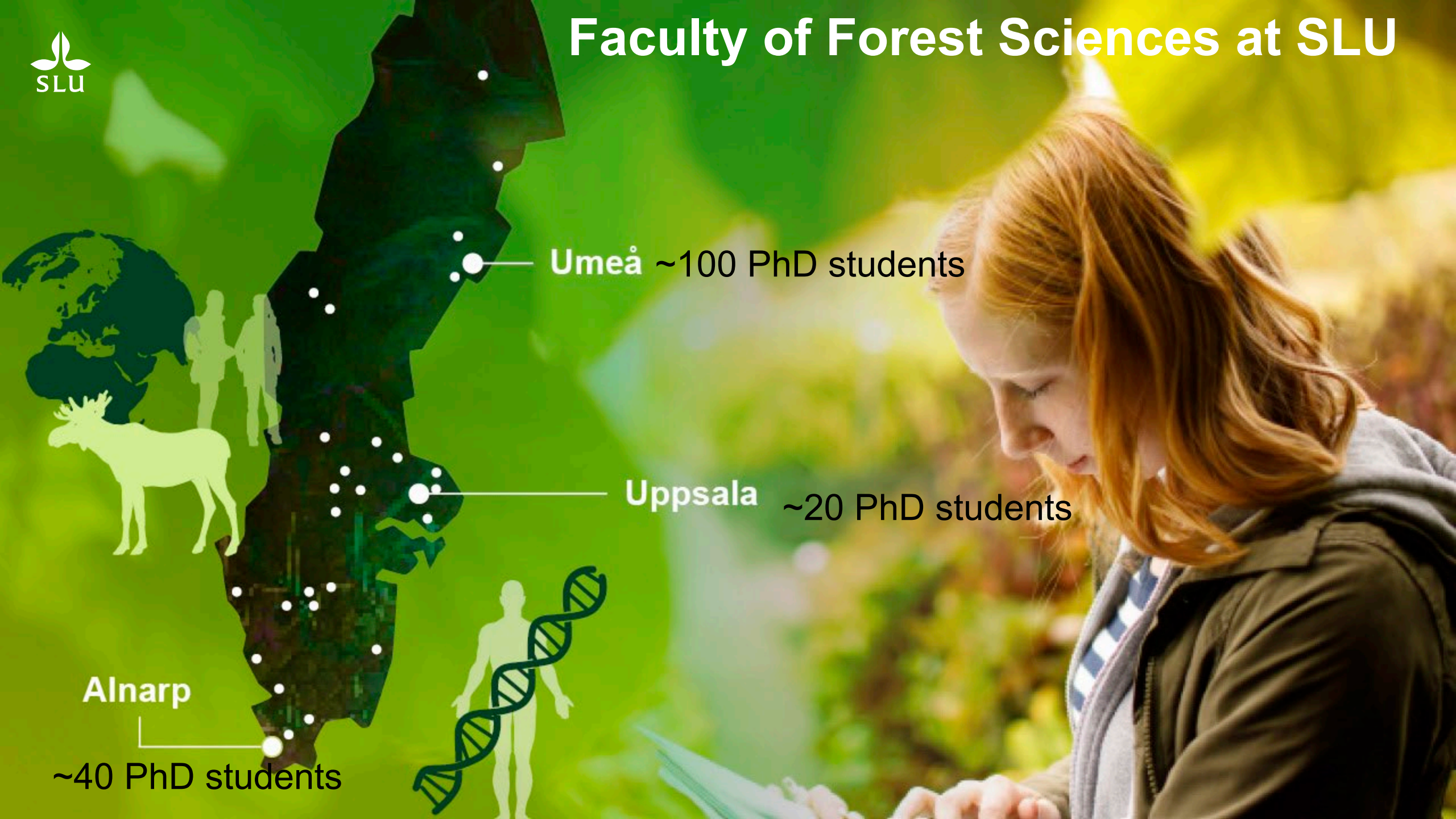
April 1st 2021

MISSION

Bring together diverse expertise to train doctoral students at the faculty, with the skills, knowledge and the network to tackle today's evolving issues and future challenges.



Faculty of Forest Sciences at SLU

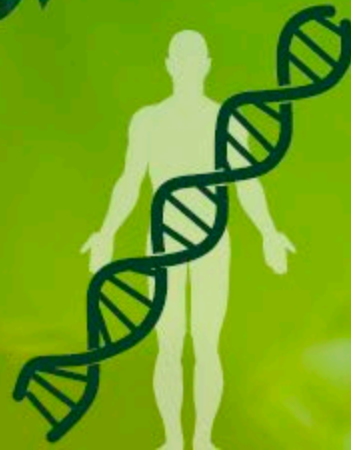


Umeå ~100 PhD students

Uppsala ~20 PhD students

Alnarp

~40 PhD students





~160 PhD students



We offer:

- Thematic courses that are given by the departments
- Seminars/workshops on transferable skills
- Networking events
- Information channel for relevant events/courses
- Promotion of the Phd students' work to the society
- Funding for travelling to the events organised by SILVA
- PhD conference

Qualifications Ordinance: Degree of Doctor

Scope

A Degree of Doctor is awarded after the third-cycle student has completed a study programme of 240 credits in a subject in which third-cycle teaching is offered.

Objectives for the Degree of Doctor the third-cycle student shall

Knowledge and Understanding

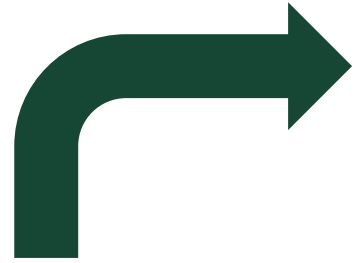
- *demonstrate broad knowledge and systematic understanding of the research field as well as advanced and up-to-date specialised knowledge in a limited area of this field, and*
- *demonstrate familiarity with research methodology in general and the methods of the specific field of research in particular.*

Competence and skills

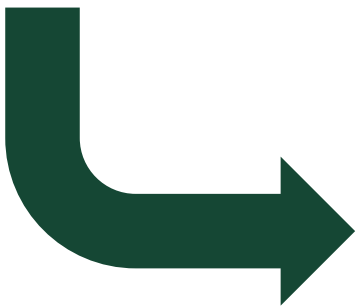
- *demonstrate the capacity for scholarly analysis and synthesis as well to review and assess new and complex phenomena, issues and situations autonomously and critically;*
- *demonstrate the ability to identify and formulate issues with scholarly precision critically, autonomously and creatively, and to plan and use appropriate methods to undertake research and other qualified tasks within predetermined time frames and to review and evaluate such work;*
- *demonstrate through a dissertation the ability to make a significant contribution to the formation of knowledge through his or her own research;*
- *demonstrate the ability in both national and international contexts to present and discuss research and research findings authoritatively in speech and writing and in dialogue with the academic community and society in general;*
- *demonstrate the ability to identify the need for further knowledge and*
- *demonstrate the capacity to contribute to social development and support the learning of others both through research and education and in some other qualified professional capacity.*

Judgement and approach

- *demonstrate intellectual autonomy and disciplinary rectitude as well as the ability to make assessments of research ethics, and*
- *demonstrate specialised insight into the possibilities and limitations of research, its role in society and the responsibility of the individual for how it is used.*



Learning outcomes for the Degree of Doctor



A PhD student at the Faculty of forest Sciences

Critical thinker

Creative, Skilled and Smart

Visionary

Knowledgeable and analytical

Open & Communicative

Independent

Aware and Global



SILVA/IUFRO Div. 3 PhD student conference

PO Bäckströms auditorium, 17-20 juni

The conference theme is **Sustainable forest management adaptation to climate change.**

The conference will touch upon the following subthemes

- Biodiversity conservation
- Peatland forestry and restoration
- Forest operations for management and restoration
- Tree species mixtures
- Detection and resistance to natural disturbances and damage mitigation
- Stakeholder engagement and participation

For program
see here

