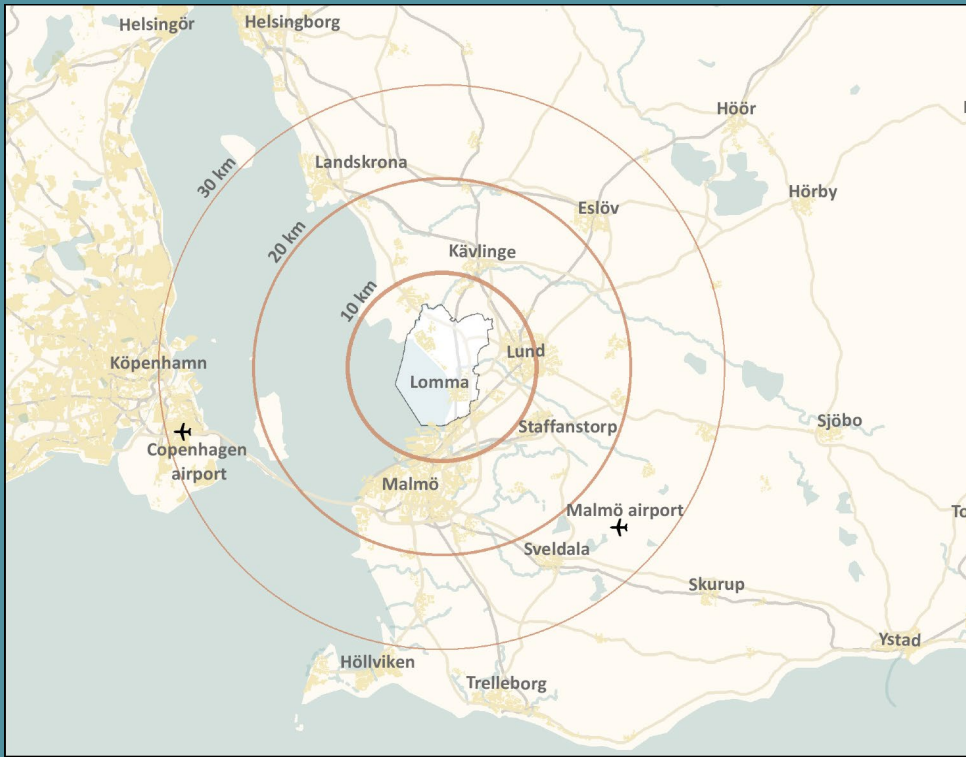




# Challenges for future climate adaptations – a local perspective

Helena Björn  
Environmental strategist











# 12 extreme weather events since 2007



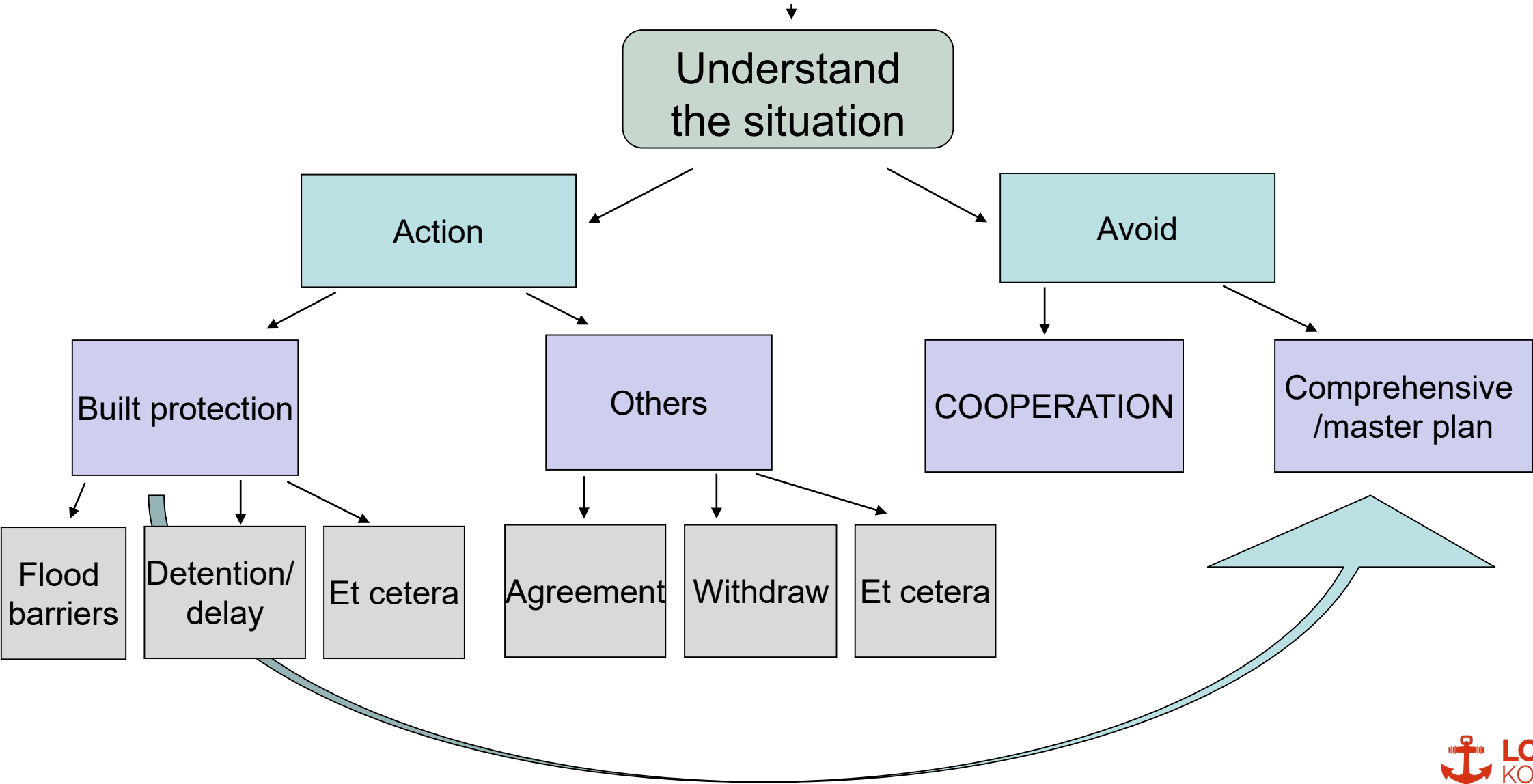
Spatial  
planning

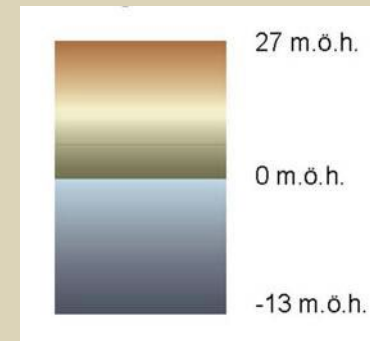
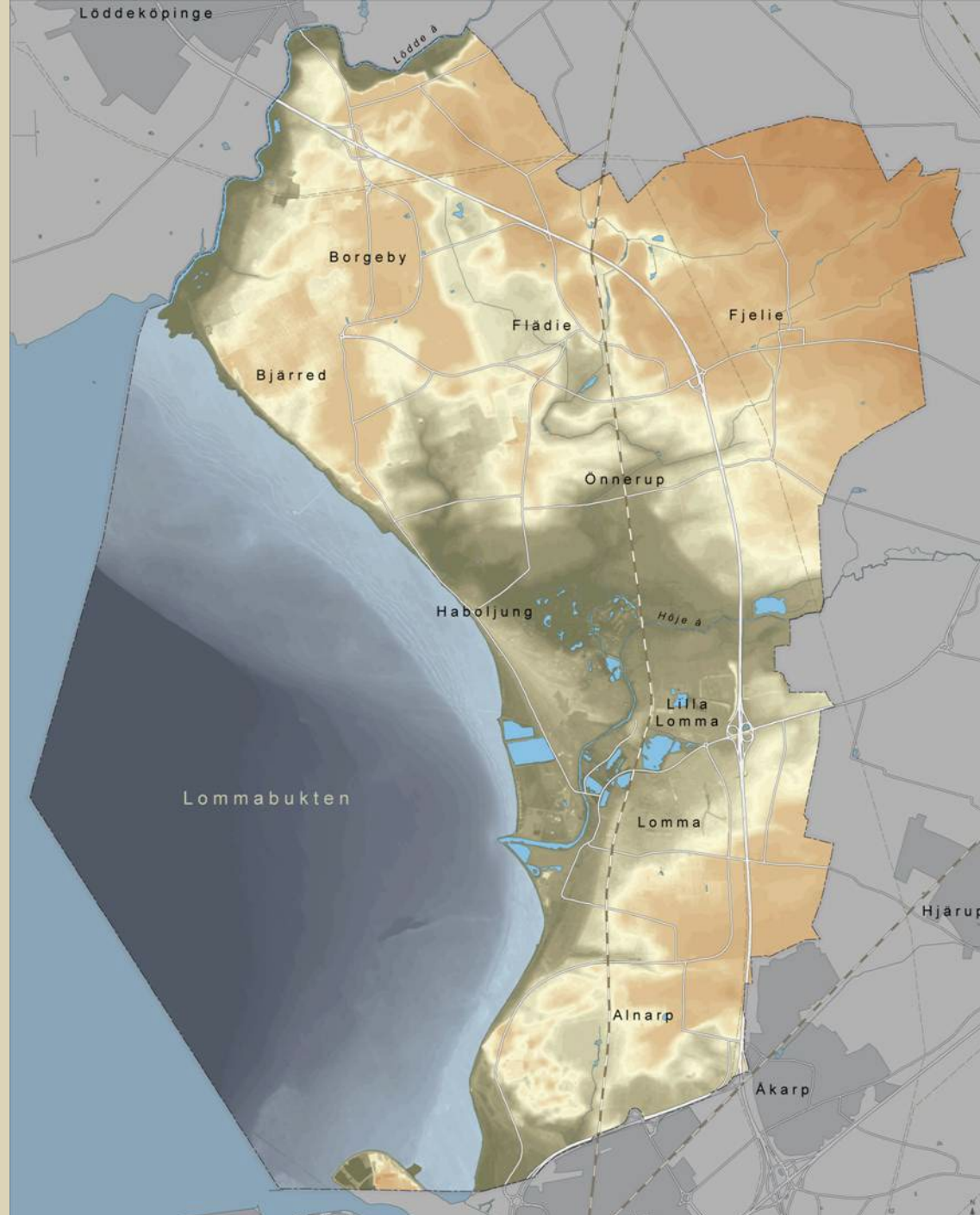
Business  
activities

Land use/  
**CLIMATE CHANGE**  
maintenance

Changed Land Use


# Climate adaptation

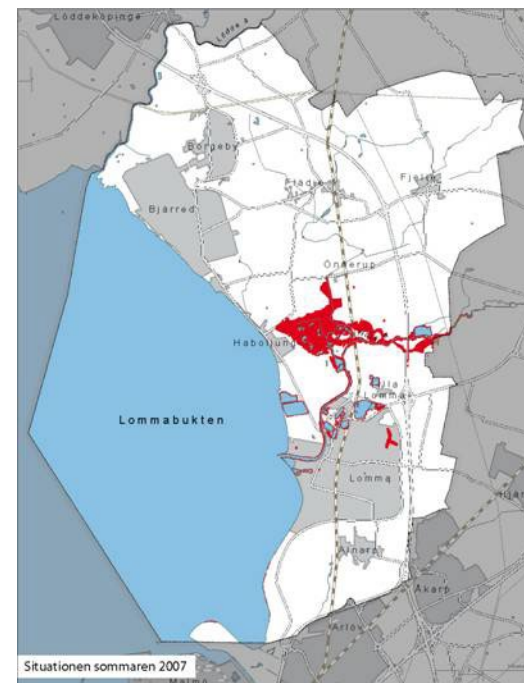
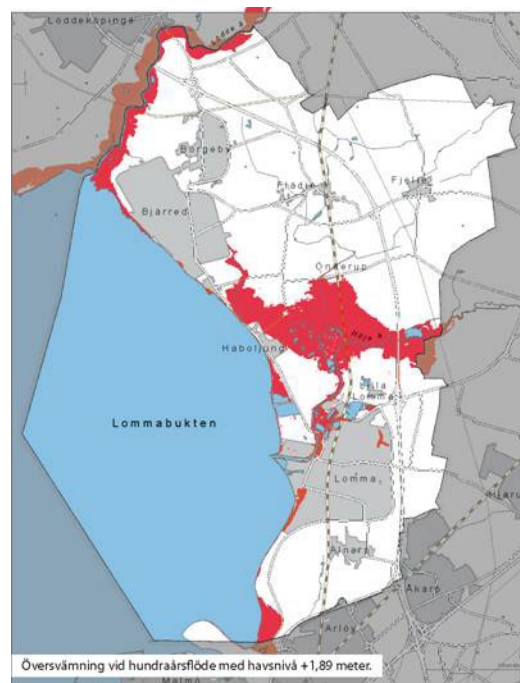
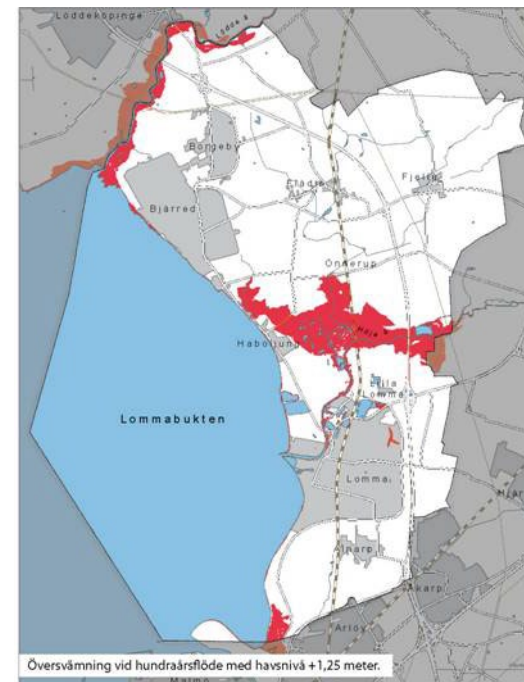
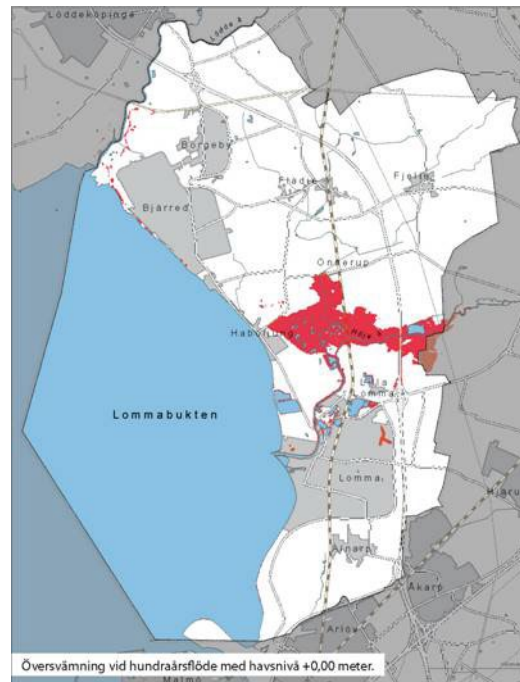




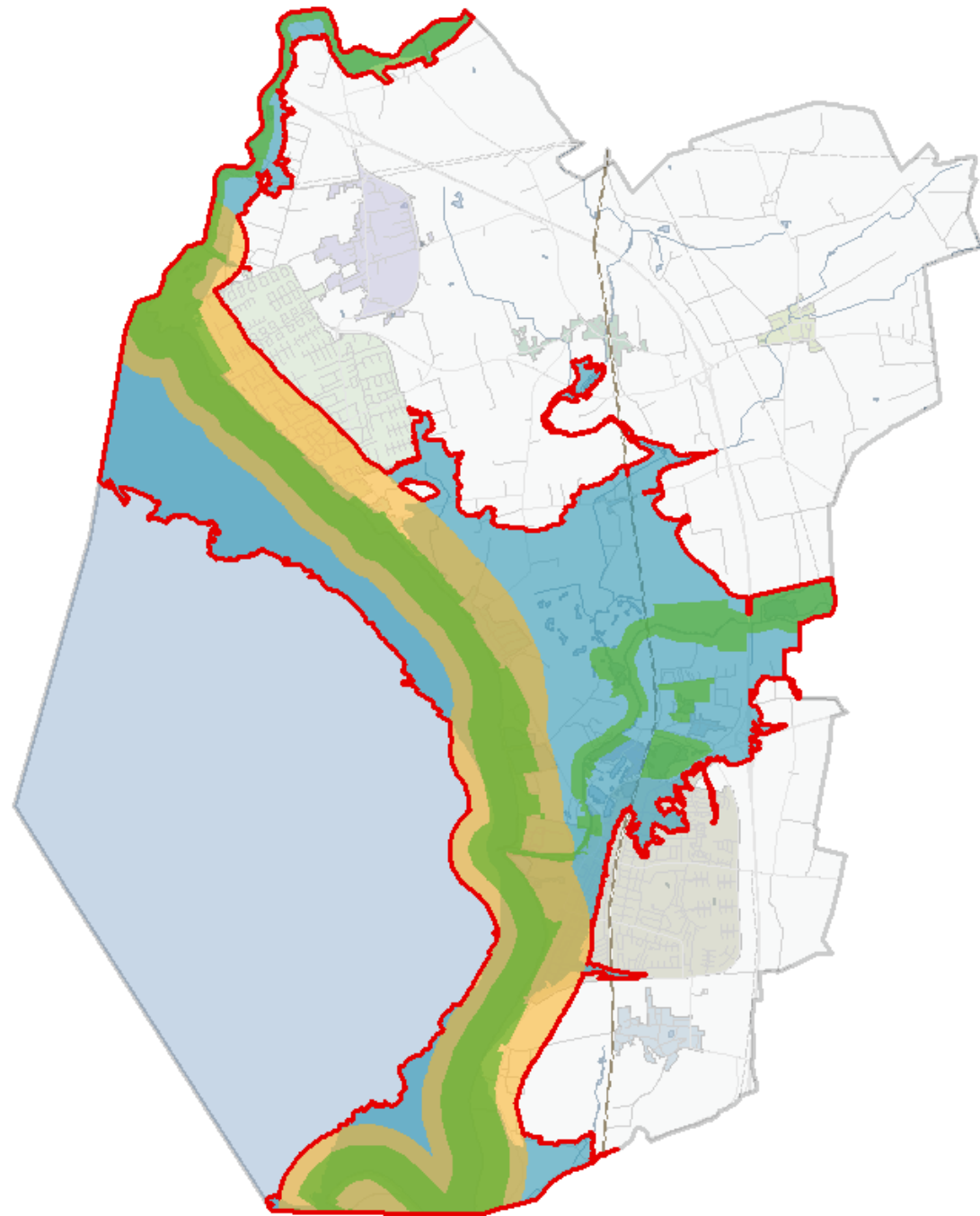
# Miljö och riskfaktorer

## Översvämningsscenarier

 Översvämningsscenario

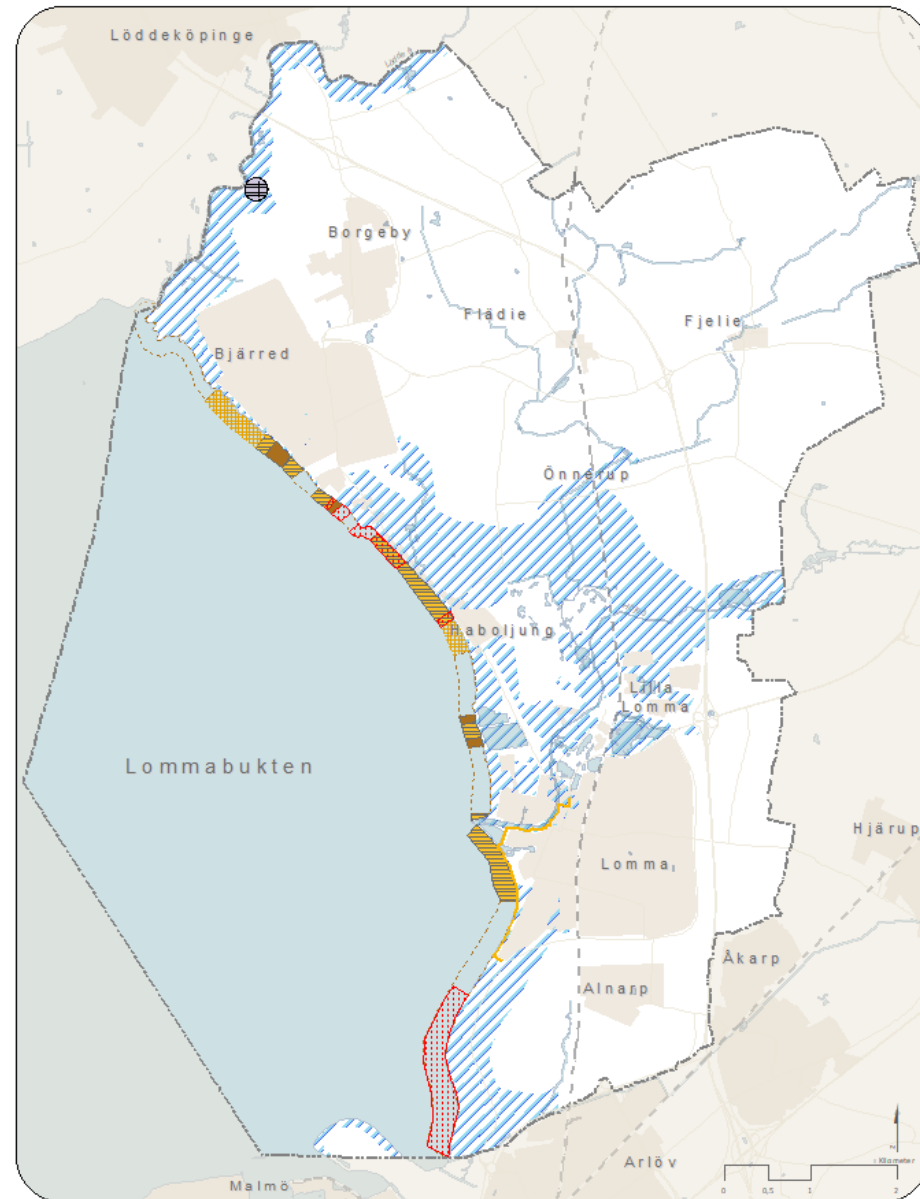




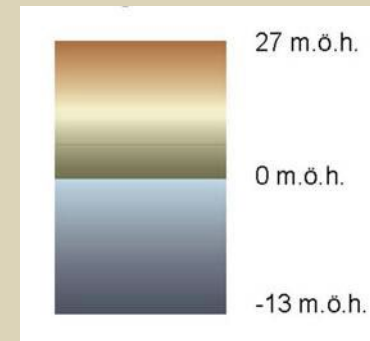
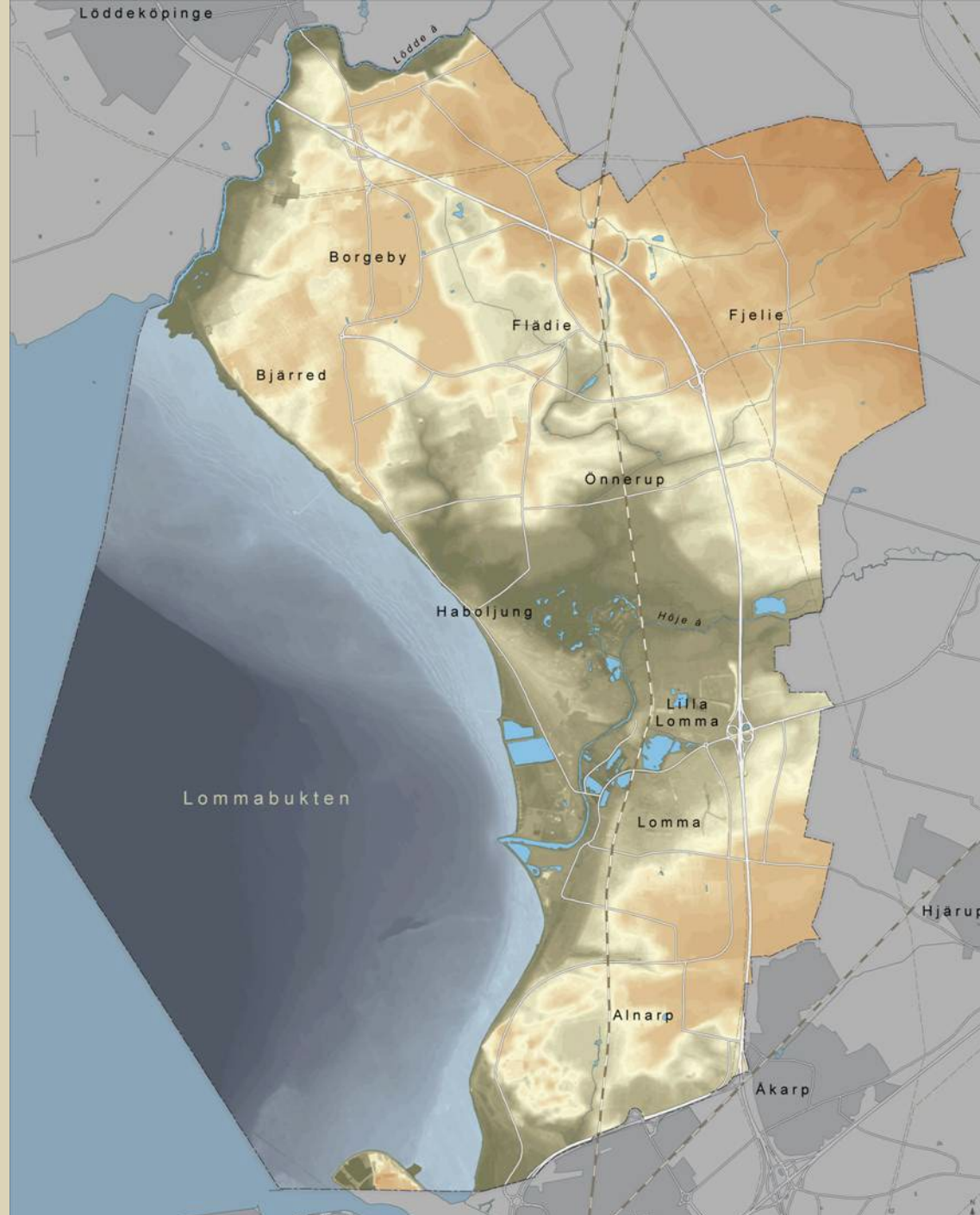


## Övriga skyddsåtgärder för klimatanpassning

- Reservat för skyddsvall
- Respekt kustzon
- Skyddsområde avloppsreningsverk
- Ej kommunägd strand
- Befintligt erosionskydd
- Erosionskydd prio 1
- Erosionskydd prio 2
- Inga planerade erosionskydd



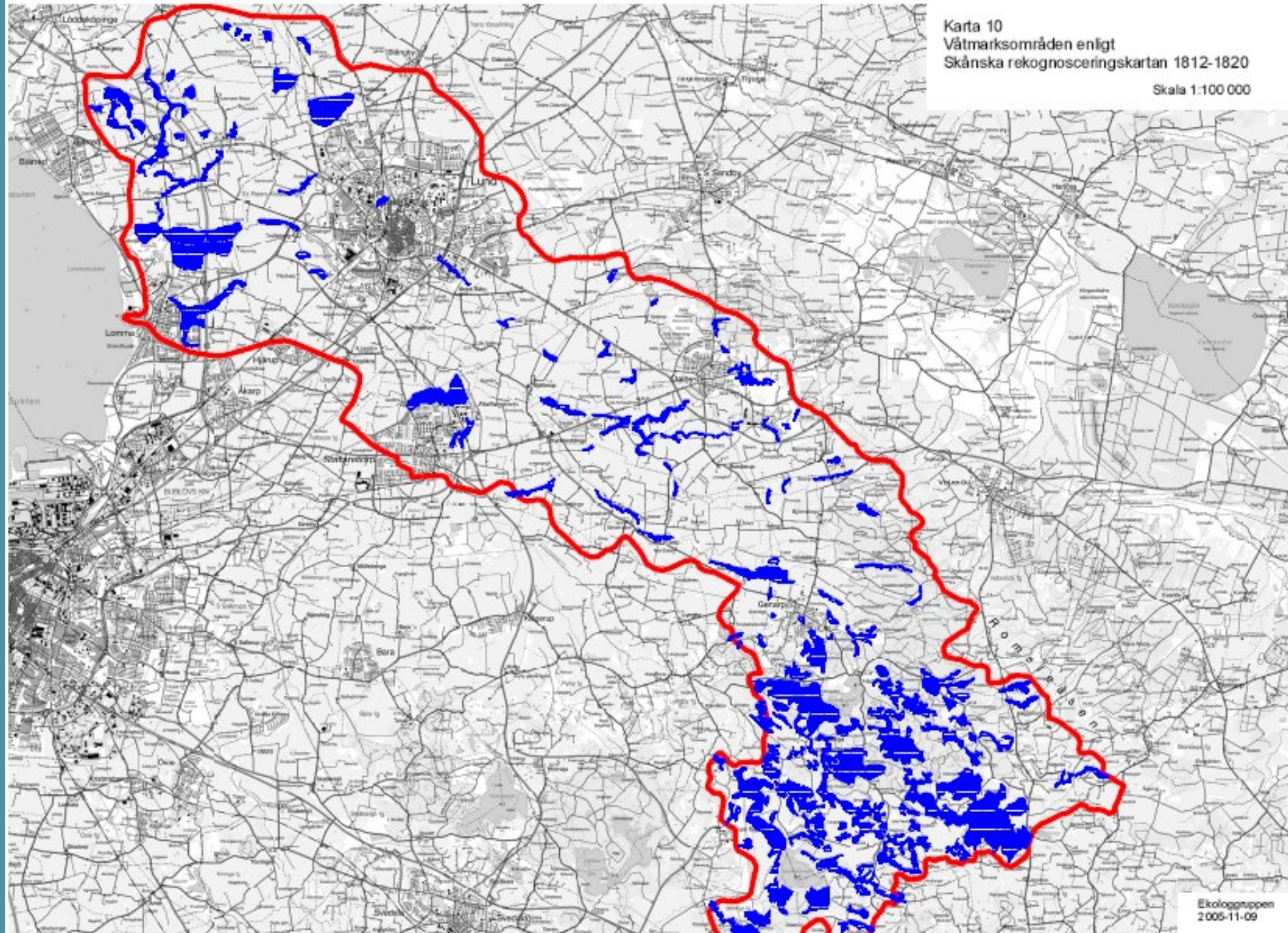






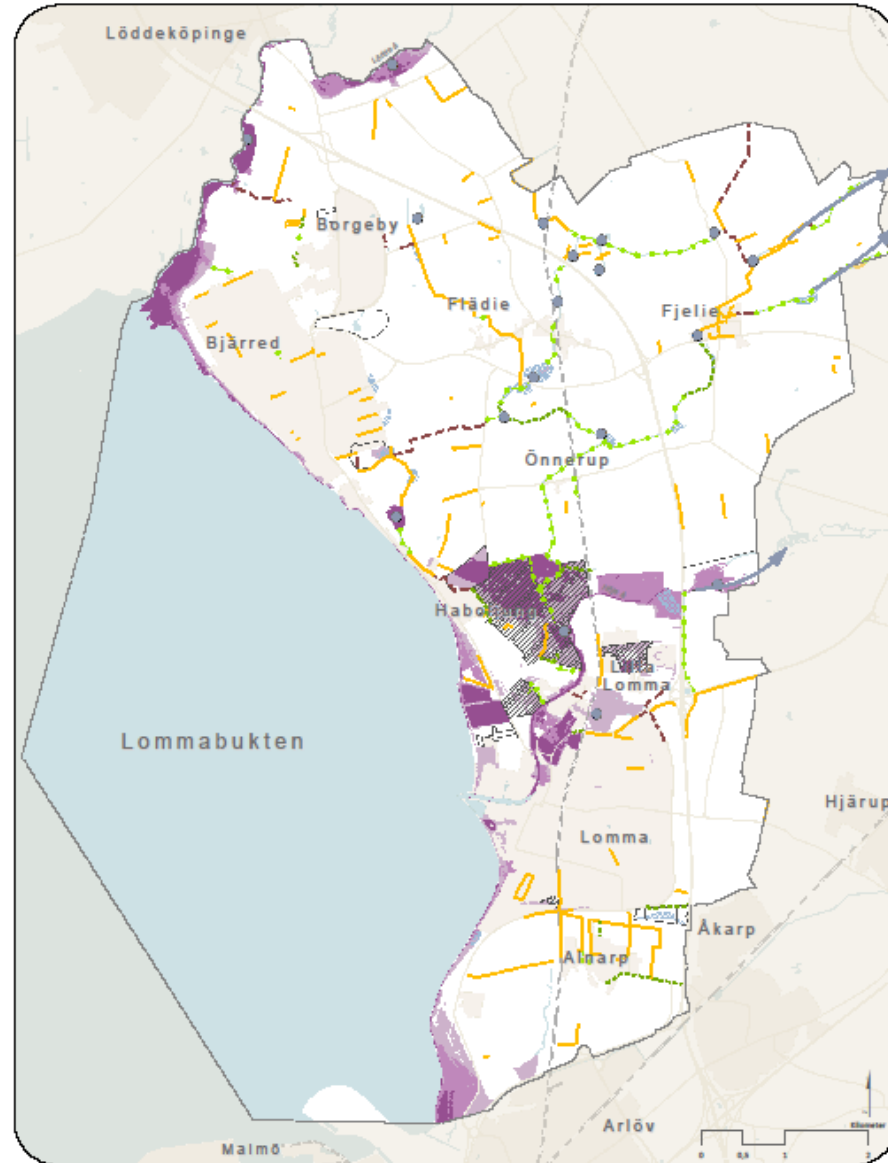
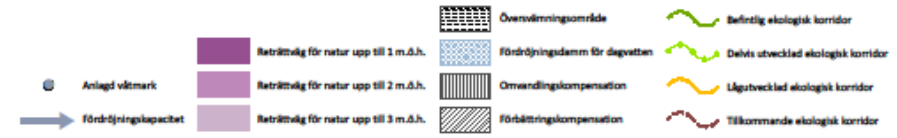
Karta 10  
Våtmarksområden enligt  
Skånska rekognoseringskartan 1812-1820

Skala 1:100 000





# Naturbaserade åtgärder för klimatanpassning







# Challenges?

- Ecosystem services intact
- Communication
- Stakeholders
- Cooperation
- "Territorial rights"
- Finance



# Solutions?

- Understanding
- Multifunction
- Cooperation
- Access
- Retreat?
- **Smale scale**



**Thank You!**

## Further reading:

[www.lomma.se/oversiktsplan](http://www.lomma.se/oversiktsplan)

[www.lomma.se/miljomal](http://www.lomma.se/miljomal)

[www.lomma.se/lommabukten](http://www.lomma.se/lommabukten)

[www.lomma.se/naturmiljoprogram](http://www.lomma.se/naturmiljoprogram)

[www.lomma.se/kustzonsprogram](http://www.lomma.se/kustzonsprogram)

[www.vattenatlas.se](http://www.vattenatlas.se)